

# HC-278H Lattice Boom Lift Crane Capacities

PCSA Class 12-1534  
Refer to notes page 20

**Boom - Tube; 80" (2.03 m) wide, 68" (1.73 m) deep with open throat top section.**

**Jib - Tube; 32" (.81 m) wide, 24" (.61 m) deep.**

**Mounting - rubber tire mobile base: Link-Belt; 12x6 drive, 288" (6.60 m) wheel-base, 11' 10" (3.61 m) wide.**

**Counterweights:**

- "A" Upper - 30,000 lbs. (13 608 kg)
- "AB" Upper - 55,200 lbs. (25 039 kg)
- "ABC" Upper - 76,700 lbs. (34 791 kg)
- "ABCD" Upper - 98,200 lbs. (44 544 kg)
- "A" Bumper - 11,400 lbs. (5 171 kg)
- "AB" Bumper - 26,700 lbs. (12 111 kg)

**Maximum boom or boom + jib machine on outriggers can lift off ground unassisted - without load**

| Standard HC-278H must be equipped with the counterweights listed below when the indicated boom or boom + jib lengths are used. | Boom or boom + jib lengths allowed | On Outriggers |        |            |               |           |        |            |               |
|--|------------------------------------|---------------|--------|------------|---------------|-----------|--------|------------|---------------|
|  |                                    | Over Rear     |        |            |               | Over Side |        |            |               |
|  |                                    | Boom          |        | Boom + Jib |               | Boom      |        | Boom + Jib |               |
|  |                                    | Feet          | meters | Feet       | meters        | Feet      | meters | Feet       | meters        |
| Ctwt. 0 + 0  | Minimum                            | 60            | 18.29  | n/a        | n/a           | 60        | 18.29  | n/a        | n/a           |
|  | Maximum                            | 210           | 64.01  | n/a        | n/a           | 190       | 57.91  | n/a        | n/a           |
| Ctwt. A + 0  | Minimum                            | 60            | 18.29  | n/a        | n/a           | 60        | 18.29  | n/a        | n/a           |
|  | Maximum                            | 240           | 73.15  | n/a        | n/a           | 230       | 70.10  | n/a        | n/a           |
| Ctwt. AB + 0   | Minimum                            | 60            | 18.29  | n/a        | n/a           | 60        | 18.29  | n/a        | n/a           |
|  | Maximum                            | 270           | 82.30  | n/a        | n/a           | 250       | 76.20  | n/a        | n/a           |
| Ctwt. ABCD + 0   | Minimum                            | 60            | 18.29  | 60 + 30    | 18.29 + 9.14  | 60        | 18.29  | 60 + 30    | 18.29 + 9.14  |
|  | Maximum                            | 310           | 94.49  | 270 + 100  | 82.30 + 30.48 | 300       | 91.44  | 260 + 100  | 79.25 + 30.48 |
| Ctwt. ABCD + A   | Minimum                            | 100           | 30.48  | n/a        | n/a           | 100       | 30.48  | n/a        | n/a           |
|  | Maximum                            | 320           | 97.54  | n/a        | n/a           | 300       | 91.44  | n/a        | n/a           |
| Ctwt. ABCD + AB  | Minimum                            | 140           | 42.67  | 140 + 30   | 42.67 + 9.14  | 140       | 42.67  | 140 + 30   | 42.67 + 9.14  |
|  | Maximum                            | 330           | 100.58 | 300 + 100  | 91.44 + 30.48 | 310       | 94.49  | 270 + 100  | 82.30 + 30.48 |

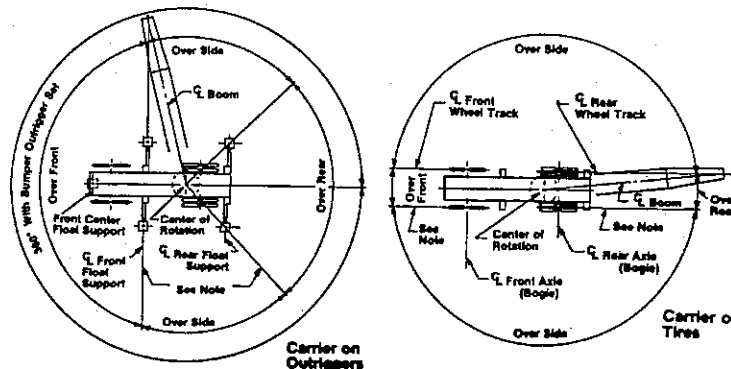
**Maximum boom or boom + jib machine on tires can lift off ground unassisted - without load**  
(Refer to Operator's Manual for Travel Restrictions)

| Standard HC-278H must be equipped with the counterweights listed below when the indicated boom lengths are used. | Boom lengths allowed | On Outriggers |        |            |        |
|--|----------------------|---------------|--------|------------|--------|
|  |                      | Over Rear     |        |            |        |
|  |                      | Boom          |        | Boom + Jib |        |
|  |                      | Feet          | meters | Feet       | meters |
| Ctwt. 0 + 0  | Minimum              | 60            | 18.29  | n/a        | n/a    |
|  | Maximum              | 110           | 33.53  | n/a        | n/a    |
| Ctwt. A + 0  | Minimum              | 60            | 18.29  | n/a        | n/a    |
|  | Maximum              | 150           | 45.72  | n/a        | n/a    |
| Ctwt. AB + 0   | Minimum              | 60            | 18.29  | n/a        | n/a    |
|  | Maximum              | 180           | 54.86  | n/a        | n/a    |
| Ctwt. ABCD + 0   | Minimum              | 60            | 18.29  | n/a        | n/a    |
|  | Maximum              | 210           | 64.01  | n/a        | n/a    |
| Ctwt. ABCD + A   | Minimum              | 100           | 30.48  | n/a        | n/a    |
|  | Maximum              | 230           | 70.10  | n/a        | n/a    |
| Ctwt. ABCD + AB  | Minimum              | 140           | 42.67  | n/a        | n/a    |
|  | Maximum              | 230           | 70.10  | n/a        | n/a    |

## Working Areas

- These lines determine the limiting position of any load for operation within working areas indicated.

**Caution:** This material is for reference only. Operator must refer to in-cab Crane Rating Manual to determine allowable machine lifting capacities and operating procedures.



**HC-278H Lift Crane Capacities - On Outriggers**

| Boom Length (ft.) | Load Radius (ft.) | Boom Angle (degree) | Capacities - On Outriggers Over Rear |          |          |            |   |   |          |          |          |            | Capacities - On Outriggers 360 Degree Rotation |          |            |          |          |                    |          |          |          |          |          |          |          |          |          |          |          |          |          |          |
|-------------------|-------------------|---------------------|--------------------------------------|----------|----------|------------|---|---|----------|----------|----------|------------|--|----------|------------|----------|----------|--------------------|----------|----------|----------|----------|----------|----------|----------|----------|----------|----------|----------|----------|----------|----------|
|                   |                   |                     | 0 + 0                                | "A" + 0  | "AB" + 0 | "ABCD" + 0 | "A" cwt.                                      | "ABCD" + "AB" cwt.                            | 0 + 0    | "A" + 0  | "AB" + 0 | "ABCD" + 0 | "A" cwt.                                       | "AB" + 0 | "ABCD" + 0 | "A" cwt. | "AB" + 0 | "ABCD" + "AB" cwt. |          |          |          |          |          |          |          |          |          |          |          |          |          |          |
|                   |                   |                     | cwt.                                 | cwt.     | cwt.     | cwt.       | (see note 1 under General Notices on page 20) | (see note 1 under General Notices on page 20) | cwt.     | cwt.     | cwt.     | cwt.       | cwt.   | cwt.     | cwt.       | cwt.     | cwt.     | cwt.               |          |          |          |          |          |          |          |          |          |          |          |          |          |          |
| 60'<br>(18.29 m)  | 10.4              | --                  | 384,100*                             | 424,100* | 441,600* | 500,000*   | 600,000*                                      | 600,000*                                      | 384,100* | 424,100* | 441,600* | 500,000*   | 600,000*                                       | 600,000* | 384,100*   | 424,100* | 441,600* | 500,000*           | 600,000* | 600,000* | 384,100* | 424,100* | 441,600* | 500,000* | 600,000* | 600,000* | 384,100* | 424,100* | 441,600* | 500,000* | 600,000* | 600,000* |
|                   | 12.0              | --                  | 354,900*                             | 391,900* | 421,200* | 437,200*   | 500,000*                                      | 500,000*                                      | 354,900* | 391,900* | 421,200* | 437,200*   | 500,000*                                       | 500,000* | 354,900*   | 391,900* | 421,200* | 437,200*           | 500,000* | 500,000* | 354,900* | 391,900* | 421,200* | 437,200* | 500,000* | 500,000* | 354,900* | 391,900* | 421,200* | 437,200* | 500,000* | 500,000* |
|                   | 13.0              | --                  | 329,700*                             | 364,200* | 395,800* | 417,900*   | 417,900*                                      | 417,900*                                      | 329,700* | 364,200* | 395,800* | 417,900*   | 417,900*                                       | 417,900* | 329,700*   | 364,200* | 395,800* | 417,900*           | 417,900* | 417,900* | 329,700* | 364,200* | 395,800* | 417,900* | 417,900* | 417,900* | 329,700* | 364,200* | 395,800* | 417,900* | 417,900* | 417,900* |
|                   | 14.0              | --                  | 307,700*                             | 339,900* | 369,600* | 400,300*   | 400,300*                                      | 400,300*                                      | 307,700* | 339,900* | 369,600* | 400,300*   | 400,300*                                       | 400,300* | 307,700*   | 339,900* | 369,600* | 400,300*           | 400,300* | 400,300* | 307,700* | 339,900* | 369,600* | 400,300* | 400,300* | 400,300* | 307,700* | 339,900* | 369,600* | 400,300* | 400,300* | 400,300* |
|                   | 15.0              | --                  | 288,500*                             | 318,700* | 346,500* | 383,900*   | 383,900*                                      | 383,900*                                      | 288,500* | 318,700* | 346,500* | 383,900*   | 383,900*                                       | 383,900* | 288,500*   | 318,700* | 346,500* | 383,900*           | 383,900* | 383,900* | 288,500* | 318,700* | 346,500* | 383,900* | 383,900* | 383,900* | 288,500* | 318,700* | 346,500* | 383,900* | 383,900* | 383,900* |
|                   | 16.0              | --                  | 271,300*                             | 299,800* | 326,200* | 367,900*   | 367,900*                                      | 367,900*                                      | 271,300* | 299,800* | 326,200* | 367,900*   | 367,900*                                       | 367,900* | 271,300*   | 299,800* | 326,200* | 367,900*           | 367,900* | 367,900* | 271,300* | 299,800* | 326,200* | 367,900* | 367,900* | 367,900* | 271,300* | 299,800* | 326,200* | 367,900* | 367,900* | 367,900* |
|                   | 17.0              | --                  | 256,200*                             | 283,100* | 307,900* | 347,300*   | 347,300*                                      | 347,300*                                      | 256,200* | 283,100* | 307,900* | 347,300*   | 347,300*                                       | 347,300* | 256,200*   | 283,100* | 307,900* | 347,300*           | 347,300* | 347,300* | 256,200* | 283,100* | 307,900* | 347,300* | 347,300* | 347,300* | 256,200* | 283,100* | 307,900* | 347,300* | 347,300* | 347,300* |
|                   | 18.0              | --                  | 242,400*                             | 268,000* | 291,700* | 329,100*   | 329,100*                                      | 329,100*                                      | 242,400* | 268,000* | 291,700* | 329,100*   | 329,100*                                       | 329,100* | 242,400*   | 268,000* | 291,700* | 329,100*           | 329,100* | 329,100* | 242,400* | 268,000* | 291,700* | 329,100* | 329,100* | 329,100* | 242,400* | 268,000* | 291,700* | 329,100* | 329,100* | 329,100* |
|                   | 19.0              | --                  | 230,100*                             | 254,600* | 276,900* | 312,500*   | 312,500*                                      | 312,500*                                      | 230,100* | 254,600* | 276,900* | 312,500*   | 312,500*                                       | 312,500* | 230,100*   | 254,600* | 276,900* | 312,500*           | 312,500* | 312,500* | 230,100* | 254,600* | 276,900* | 312,500* | 312,500* | 312,500* | 230,100* | 254,600* | 276,900* | 312,500* | 312,500* | 312,500* |
|                   | 20.0              | --                  | 183,100*                             | 202,700* | 220,700* | 249,300*   | 249,300*                                      | 249,300*                                      | 183,100* | 202,700* | 220,700* | 249,300*   | 249,300*                                       | 249,300* | 183,100*   | 202,700* | 220,700* | 249,300*           | 249,300* | 249,300* | 183,100* | 202,700* | 220,700* | 249,300* | 249,300* | 249,300* | 183,100* | 202,700* | 220,700* | 249,300* | 249,300* | 249,300* |
| 25.0              | --                | 130,100             | 167,900*                             | 183,000* | 206,800* | 206,800*   | 206,800*                                      | 130,100                                       | 167,900* | 183,000* | 206,800* | 206,800*   | 206,800*                                       | 130,100  | 167,900*   | 183,000* | 206,800* | 206,800*           | 206,800* | 130,100  | 167,900* | 183,000* | 206,800* | 206,800* | 206,800* | 130,100  | 167,900* | 183,000* | 206,800* | 206,800* | 206,800* |          |
| 30.0              | --                | 99,900              | 132,400                              | 155,800* | 176,400* | 176,400*   | 176,400*                                      | 99,900  | 132,400  | 155,800* | 176,400* | 176,400*   | 176,400*                                       | 99,900   | 132,400    | 155,800* | 176,400* | 176,400*           | 176,400* | 99,900   | 132,400  | 155,800* | 176,400* | 176,400* | 176,400* | 99,900   | 132,400  | 155,800* | 176,400* | 176,400* | 176,400* |          |
| 35.0              | --                | 80,500              | 107,300                              | 130,800  | 153,400* | 153,400*   | 153,400*                                      | 80,500  | 107,300  | 130,800  | 153,400* | 153,400*   | 153,400*                                       | 80,500   | 107,300    | 130,800  | 153,400* | 153,400*           | 153,400* | 80,500   | 107,300  | 130,800  | 153,400* | 153,400* | 153,400* | 80,500   | 107,300  | 130,800  | 153,400* | 153,400* | 153,400* |          |
| 40.0              | --                | 57,200              | 76,700                               | 94,200   | 121,200* | 121,200*   | 121,200*                                      | 57,200  | 76,700   | 94,200   | 121,200* | 121,200*   | 121,200*                                       | 57,200   | 76,700     | 94,200   | 121,200* | 121,200*           | 121,200* | 57,200   | 76,700   | 94,200   | 121,200* | 121,200* | 121,200* | 57,200   | 76,700   | 94,200   | 121,200* | 121,200* | 121,200* |          |
| 50.0              | --                | 43,500              | 59,000                               | 72,800   | 93,100*  | 93,100*    | 93,100*                                       | 43,500  | 59,000   | 72,800   | 93,100*  | 93,100*    | 93,100*  | 43,500   | 59,000     | 72,800   | 93,100*  | 93,100*            | 93,100*  | 43,500   | 59,000   | 72,800   | 93,100*  | 93,100*  | 93,100*  | 43,500   | 59,000   | 72,800   | 93,100*  | 93,100*  | 93,100*  |          |
| 60.0              | --                | 356,700*            | 366,400*                             | 366,400* | 366,400* | 366,400*   | 366,400*                                      | 356,700*                                      | 366,400* | 366,400* | 366,400* | 366,400*   | 366,400*                                       | 356,700* | 366,400*   | 366,400* | 366,400* | 366,400*           | 366,400* | 356,700* | 366,400* | 366,400* | 366,400* | 366,400* | 366,400* | 366,400* | 366,400* | 366,400* | 366,400* | 366,400* | 366,400* |          |
| 70'<br>(21.34 m)  | 12.9              | --                  | 354,200*                             | 358,400* | 358,400* | 358,400*   | 358,400*                                      | 354,200*                                      | 358,400* | 358,400* | 358,400* | 358,400*   | 358,400*                                       | 354,200* | 358,400*   | 358,400* | 358,400* | 358,400*           | 358,400* | 354,200* | 358,400* | 358,400* | 358,400* | 358,400* | 358,400* | 358,400* | 358,400* | 358,400* | 358,400* | 358,400* | 358,400* |          |
|                   | 13.0              | --                  | 329,100*                             | 339,300* | 351,700* | 351,700*   | 351,700*                                      | 329,100*                                      | 339,300* | 351,700* | 351,700* | 351,700*   | 351,700*                                       | 329,100* | 339,300*   | 351,700* | 351,700* | 351,700*           | 351,700* | 329,100* | 339,300* | 351,700* | 351,700* | 351,700* | 351,700* | 351,700* | 351,700* | 351,700* | 351,700* | 351,700* | 351,700* |          |
|                   | 14.0              | --                  | 288,000*                             | 318,200* | 344,000* | 344,000*   | 344,000*                                      | 288,000*                                      | 318,200* | 344,000* | 344,000* | 344,000*   | 344,000*                                       | 288,000* | 318,200*   | 344,000* | 344,000* | 344,000*           | 344,000* | 288,000* | 318,200* | 344,000* | 344,000* | 344,000* | 344,000* | 344,000* | 344,000* | 344,000* | 344,000* | 344,000* | 344,000* |          |
|                   | 15.0              | --                  | 270,900*                             | 299,500* | 325,600* | 337,500*   | 337,500*                                      | 270,900*                                      | 299,500* | 325,600* | 337,500* | 337,500*   | 337,500*                                       | 270,900* | 299,500*   | 325,600* | 337,500* | 337,500*           | 337,500* | 270,900* | 299,500* | 325,600* | 337,500* | 337,500* | 337,500* | 337,500* | 337,500* | 337,500* | 337,500* | 337,500* | 337,500* |          |
|                   | 16.0              | --                  | 255,800*                             | 282,700* | 307,400* | 329,100*   | 329,100*                                      | 255,800*                                      | 282,700* | 307,400* | 329,100* | 329,100*   | 329,100*                                       | 255,800* | 282,700*   | 307,400* | 329,100* | 329,100*           | 329,100* | 329,100* | 255,800* | 282,700* | 307,400* | 329,100* | 329,100* | 329,100* | 329,100* | 329,100* | 329,100* | 329,100* | 329,100* |          |
|                   | 17.0              | --                  | 242,100*                             | 267,700* | 291,300* | 322,900*   | 322,900*                                      | 242,100*                                      | 267,700* | 291,300* | 322,900* | 322,900*   | 322,900*                                       | 242,100* | 267,700*   | 291,300* | 322,900* | 322,900*           | 322,900* | 322,900* | 242,100* | 267,700* | 291,300* | 322,900* | 322,900* | 322,900* | 322,900* | 322,900* | 322,900* | 322,900* |          |          |
|                   | 18.0              | --                  | 229,800*                             | 254,200* | 276,500* | 312,000*   | 312,000*                                      | 229,800*                                      | 254,200* | 276,500* | 312,000* | 312,000*   | 312,000*                                       | 229,800* | 254,200*   | 276,500* | 312,000* | 312,000*           | 312,000* | 312,000* | 229,800* | 254,200* | 276,500* | 312,000* | 312,000* | 312,000* | 312,000* | 312,000* | 312,000* | 312,000* |          |          |
|                   | 19.0              | --                  | 183,000*                             | 202,400* | 220,500* | 249,000*   | 249,000*                                      | 183,000*                                      | 202,400* | 220,500* | 249,000* | 249,000*   | 249,000*                                       | 183,000* | 202,400*   | 220,500* | 249,000* | 249,000*           | 249,000* | 249,000* | 183,000* | 202,400* | 220,500* | 249,000* | 249,000* | 249,000* | 249,000* | 249,000* | 249,000* | 249,000* |          |          |
|                   | 20.0              | --                  | 130,600                              | 167,700* | 182,800* | 206,600*   | 206,600*                                      | 130,600                                       | 167,700* | 182,800* | 206,600* | 206,600*   | 206,600*                                       | 130,600  | 167,700*   | 182,800* | 206,600* | 206,600*           | 206,600* | 206,600* | 130,600  | 167,700* | 182,800* | 206,600* | 206,600* | 206,600* | 206,600* | 206,600* | 206,600* |          |          |          |
|                   | 25.0              | --                  | 100,300                              | 132,800  | 155,600* | 176,200*   | 176,200*                                      | 100,300                                       | 132,800  | 155,600* | 176,200* | 176,200*   | 176,200*                                       | 100,300  | 132,800    | 155,600* | 176,200* | 176,200*           | 176,200* | 176,200* | 100,300  | 132,800  | 155,600* | 176,200* | 176,200* | 176,200* | 176,200* | 176,200* |          |          |          |          |
| 30.0              | --                | 80,800              | 107,600                              | 131,100  | 153,200* | 153,200*   | 80,800  | 107,600                                       | 131,100  | 153,200* | 153,200* | 153,200*   | 80,800   | 107,600  | 131,100    | 153,200* | 153,200* | 153,200*           | 153,200* | 80,800   | 107,600  | 131,100  | 153,200* | 153,200* | 153,200* | 153,200* |          |          |          |          |          |          |
| 35.0              | --                | 57,400              | 77,000                               | 94,400   | 120,900* | 120,900*   | 57,400  | 77,000  | 94,400   | 120,900* | 120,900* | 120,900*   | 57,400   | 77,000   | 94,400     | 120,900* | 120,900* | 120,900*           | 120,900* | 57,400   | 77,000   | 94,400   | 120,900* | 120,900* | 120,900* |          |          |          |          |          |          |          |
| 40.0              | --                | 43,700              | 59,300                               | 73,100   | 95,500   | 95,500     | 43,700  | 59,300  | 73,100   | 95,500   | 95,500   | 95,500     | 43,700   | 59,300   | 73,100     | 95,500   | 95,500   | 95,500             | 95,500   | 43,700   | 59,300   | 73,100   | 95,500   | 95,500   | 95,500   |          |          |          |          |          |          |          |
| 50.0              | --                | 34,800              | 47,600                               | 59,000   | 77,500*  | 77,500*    | 34,800  | 47,600  | 59,000   | 77,500*  | 77,500*  | 77,500*    | 34,800   | 47,600   | 59,000     | 77,500*  | 77,500*  | 77,500*            | 77,500*  | 34,800   | 47,600   | 59,000   | 77,500*  | 77,500*  |          |          |          |          |          |          |          |          |







**HC-278H Lift Crane Capacities - On Outriggers**

| Boom Length (ft.) | Load Radius (ft.) | Boom Angle (degree) | Capacities - On Outriggers Over Rear |          |          |            |                    |                     | Capacities - On Outriggers 360 Degree Rotation |          |          |            |                    |                     |
|-------------------|-------------------|---------------------|--------------------------------------|----------|----------|------------|--------------------|---------------------|--|----------|----------|------------|--------------------|---------------------|
|                   |                   |                     | 0 + 0                                | "A" + 0  | "AB" + 0 | "ABCD" + 0 | "ABCD" + "A" ctwf. | "ABCD" + "AB" ctwf. | 0 + 0  | "A" + 0  | "AB" + 0 | "ABCD" + 0 | "ABCD" + "A" ctwf. | "ABCD" + "AB" ctwf. |
|                   |                   |                     | ctwf.                                | ctwf.    | ctwf.    | ctwf.      | ctwf.              | ctwf.               | ctwf.  | ctwf.    | ctwf.    | ctwf.      | ctwf.              | ctwf.               |
| 170'<br>(51.82 m) | 150.0             | 30.3                | 7,800                                | 13,200   | 18,000   | 25,800     | 28,800             | 31,300*             | 10,400   | 15,200   | 23,000   | 23,000     | 23,900             | 25,000              |
|                   | 160.0             | 22.7                | 6,600                                | 11,600   | 16,000   | 23,300     | 26,100             | 28,500*             | 9,000  | 13,400   | 20,700   | 21,500     | 22,600             |                     |
|                   | 170.0             | 11.1                | 5,400                                | 10,100   | 14,300   | 21,100     | 23,800             | 26,100*             | 7,700  | 11,900   | 18,700   | 19,500     | 20,500             |                     |
|                   | 28.2              | 82.0                | 148,100                              | 152,500* | 152,500* | 152,500*   | 152,500*           | 152,500*            | 152,500*                                       | 152,500* | 152,500* | 152,500*   | 152,500*           |                     |
|                   | 30.0              | 81.4                | 132,000                              | 150,200* | 150,200* | 150,200*   | 150,200*           | 150,200*            | 150,200*                                       | 150,200* | 150,200* | 150,200*   | 150,200*           |                     |
|                   | 35.0              | 79.8                | 100,700                              | 133,000  | 142,200* | 142,200*   | 142,200*           | 142,200*            | 116,100  | 142,200* | 142,200* | 142,200*   | 142,200*           |                     |
|                   | 40.0              | 78.2                | 80,500                               | 107,200  | 136,400* | 136,400*   | 136,400*           | 136,400*            | 93,400   | 116,700  | 136,400* | 136,400*   | 136,400*           |                     |
|                   | 50.0              | 74.9                | 56,400                               | 75,700   | 93,100   | 116,500*   | 116,500*           | 116,500*            | 66,000   | 82,900   | 111,500  | 114,200    | 116,500*           |                     |
|                   | 60.0              | 71.6                | 42,200                               | 57,800   | 71,500   | 93,700     | 95,400*            | 95,400*             | 49,700   | 63,500   | 85,600   | 88,100     | 91,500             |                     |
|                   | 70.0              | 68.2                | 33,300                               | 45,800   | 57,200   | 75,400     | 79,900*            | 79,900*             | 39,100   | 50,500   | 69,200   | 71,200     | 74,000             |                     |
| 80.0              | 64.7              | 26,800              | 37,300                               | 47,000   | 62,900   | 68,700*    | 68,700*            | 32,100              | 41,400   | 57,300   | 59,000   | 61,400     |                    |                     |
| 90.0              | 61.2              | 21,900              | 31,500                               | 39,500   | 53,400   | 58,700     | 58,700             | 26,500              | 35,000   | 48,400   | 50,000   | 52,000     |                    |                     |
| 100.0             | 57.5              | 18,100              | 26,600                               | 34,100   | 46,000   | 50,700     | 52,400*            | 22,200              | 29,700   | 41,600   | 43,000   | 44,800     |                    |                     |
| 110.0             | 53.6              | 15,100              | 22,700                               | 29,500   | 40,100   | 44,300     | 46,400*            | 18,800              | 25,500   | 36,600   | 37,400   | 39,000     |                    |                     |
| 120.0             | 49.5              | 12,700              | 19,600                               | 25,700   | 35,700   | 39,200     | 41,500*            | 16,000              | 22,100   | 32,100   | 32,500   | 34,700     |                    |                     |
| 130.0             | 45.2              | 10,700              | 17,000                               | 22,600   | 31,700   | 35,200     | 37,300*            | 13,700              | 19,300   | 28,500   | 29,200   | 30,800     |                    |                     |
| 140.0             | 40.5              | 9,000               | 14,800                               | 19,900   | 28,400   | 31,600     | 34,000*            | 11,800              | 16,900   | 25,400   | 26,300   | 27,500     |                    |                     |
| 150.0             | 35.3              | 7,500               | 12,900                               | 17,700   | 25,500   | 28,500     | 30,900*            | 10,100              | 14,900   | 22,700   | 23,600   | 24,700     |                    |                     |
| 160.0             | 29.4              | 6,200               | 11,300                               | 15,700   | 23,000   | 25,800     | 28,100*            | 8,700               | 13,100   | 20,400   | 21,200   | 22,300     |                    |                     |
| 170.0             | 22.1              | 5,100               | 9,800                                | 14,000   | 20,800   | 23,400     | 25,700*            | 7,400               | 11,600   | 18,400   | 19,200   | 20,200     |                    |                     |
| 180.0             | 10.8              | 4,100               | 8,600                                | 12,500   | 18,900   | 21,400     | 23,400*            | 6,300               | 10,200   | 16,600   | 17,300   | 18,300     |                    |                     |
| 190'<br>(57.91 m) | 29.6              | 82.0                | 135,200                              | 139,300* | 139,300* | 139,300*   | 139,300*           | 139,300*            | 139,300*                                       | 139,300* | 139,300* | 139,300*   | 139,300*           |                     |
|                   | 30.0              | 81.9                | 131,900                              | 138,900* | 138,900* | 138,900*   | 138,900*           | 138,900*            | 138,900*                                       | 138,900* | 138,900* | 138,900*   | 138,900*           |                     |
|                   | 35.0              | 80.4                | 100,600                              | 132,800  | 134,100* | 134,100*   | 134,100*           | 134,100*            | 115,900  | 134,100* | 134,100* | 134,100*   | 134,100*           |                     |
|                   | 40.0              | 78.8                | 80,200                               | 107,000  | 128,700* | 128,700*   | 128,700*           | 128,700*            | 93,200   | 116,400  | 128,700* | 128,700*   | 128,700*           |                     |
|                   | 50.0              | 75.7                | 56,200                               | 75,400   | 92,800   | 116,000*   | 116,000*           | 116,000*            | 65,700   | 82,700   | 111,200  | 113,900    | 116,000*           |                     |
|                   | 60.0              | 72.6                | 41,900                               | 57,500   | 71,200   | 93,400     | 94,900*            | 94,900*             | 49,400   | 63,200   | 85,300   | 87,800     | 91,200             |                     |
|                   | 70.0              | 69.4                | 33,000                               | 45,500   | 56,900   | 75,100     | 79,400*            | 79,400*             | 38,800   | 50,200   | 68,900   | 70,900     | 73,700             |                     |
|                   | 80.0              | 66.1                | 26,500                               | 37,000   | 46,700   | 62,600     | 68,200*            | 68,200*             | 31,800   | 41,100   | 56,900   | 58,700     | 61,100             |                     |
|                   | 90.0              | 62.8                | 21,600                               | 31,100   | 39,200   | 53,000     | 58,300             | 59,200*             | 26,200   | 34,700   | 48,100   | 49,600     | 51,700             |                     |
|                   | 100.0             | 59.4                | 17,800                               | 26,300   | 33,800   | 45,600     | 50,300             | 51,900*             | 21,900   | 29,400   | 41,300   | 42,600     | 44,400             |                     |
| 110.0             | 55.8              | 14,800              | 22,400                               | 29,100   | 39,800   | 44,000     | 46,000*            | 18,500              | 25,200   | 36,200   | 37,100   | 38,700     |                    |                     |
| 120.0             | 52.1              | 12,400              | 19,300                               | 25,400   | 35,400   | 38,800     | 41,000*            | 15,700              | 21,800   | 31,800   | 32,900   | 34,400     |                    |                     |
| 130.0             | 48.1              | 10,300              | 16,600                               | 22,200   | 31,400   | 34,900     | 37,200*            | 13,400              | 19,000   | 28,100   | 29,100   | 30,500     |                    |                     |
| 140.0             | 43.9              | 8,600               | 14,400                               | 19,600   | 28,000   | 31,200     | 33,600*            | 11,400              | 16,600   | 25,000   | 25,900   | 27,200     |                    |                     |
| 150.0             | 39.4              | 7,200               | 12,600                               | 17,300   | 25,100   | 28,100     | 30,400*            | 9,800               | 14,500   | 22,400   | 23,200   | 24,400     |                    |                     |
| 160.0             | 34.4              | 5,900               | 10,900                               | 15,400   | 22,700   | 25,500     | 27,700*            | 8,300               | 12,800   | 20,100   | 20,900   | 21,900     |                    |                     |
| 170.0             | 28.6              | 4,800               | 9,500                                | 13,700   | 20,500   | 23,100     | 25,300*            | 7,100               | 11,200   | 18,100   | 18,800   | 19,800     |                    |                     |
| 180.0             | 21.5              | 3,800               | 8,200                                | 12,200   | 18,600   | 21,000     | 23,100*            | 6,000               | 9,900  | 16,300   | 17,000   | 18,000     |                    |                     |
| 190.0             | 10.5              | 2,900               | 7,100                                | 10,800   | 16,900   | 19,200     | 20,900*            | 5,000               | 8,700  | 14,700   | 15,400   | 16,300     |                    |                     |
| 200'<br>(60.96 m) | 31.0              | 82.0                | 124,000                              | 129,800* | 129,800* | 129,800*   | 129,800*           | 129,800*            | 129,800*                                       | 129,800* | 129,800* | 129,800*   | 129,800*           |                     |
|                   | 35.0              | 80.8                | 100,400                              | 126,100* | 126,100* | 126,100*   | 126,100*           | 126,100*            | 115,700  | 126,100* | 126,100* | 126,100*   | 126,100*           |                     |
|                   | 40.0              | 79.4                | 80,000                               | 106,800  | 120,800* | 120,800*   | 120,800*           | 120,800*            | 93,000   | 116,200  | 120,800* | 120,800*   | 120,800*           |                     |
|                   | 50.0              | 76.5                | 55,900                               | 75,100   | 92,500   | 107,000*   | 107,000*           | 107,000*            | 65,400   | 82,400   | 107,000* | 107,000*   | 107,000*           |                     |
|                   | 60.0              | 73.5                | 41,600                               | 57,200   | 71,000   | 93,000     | 94,300*            | 94,300*             | 49,100   | 62,900   | 85,000   | 87,500     | 90,800             |                     |

# HC-278H Lift Crane Capacities - On Outriggers

| Boom Length (ft.) | Load Radius (ft.) | Boom Angle (degree) | Capacities - On Outriggers |              |               |                     |          |                    | Capacities - On Outriggers |              |               |                     |          |                    |
|-------------------|-------------------|---------------------|----------------------------|--------------|---------------|---------------------|----------|--------------------|----------------------------|--------------|---------------|---------------------|----------|--------------------|
|                   |                   |                     | Over Rear                  |              |               | 360 Degree Rotation |          |                    | Over Rear                  |              |               | 360 Degree Rotation |          |                    |
|                   |                   |                     | 0 + 0 cwt.                 | "A" + 0 cwt. | "AB" + 0 cwt. | "ABCD" + 0 cwt.     | "A" cwt. | "ABCD" + "AB" cwt. | 0 + 0 cwt.                 | "A" + 0 cwt. | "AB" + 0 cwt. | "ABCD" + 0 cwt.     | "A" cwt. | "ABCD" + "AB" cwt. |
| 200'<br>(60.96 m) | 70.0              | 70.5                | 32,700                     | 45,100       | 56,500        | 74,700              | 78,900*  | 78,900*            | 26,100                     | 38,500       | 49,900        | 68,500              | 70,600   | 73,400             |
|                   | 80.0              | 67.4                | 26,200                     | 37,100       | 46,400        | 62,300              | 67,700*  | 67,700*            | 20,500                     | 31,500       | 40,700        | 56,600              | 58,400   | 60,700             |
|                   | 90.0              | 64.3                | 21,300                     | 30,800       | 38,800        | 52,700              | 58,000   | 58,000             | 16,300                     | 25,900       | 34,900        | 47,800              | 49,300   | 51,300             |
|                   | 100.0             | 61.0                | 17,500                     | 25,900       | 33,400        | 45,300              | 51,400*  | 51,400*            | 13,100                     | 21,600       | 29,100        | 40,900              | 42,300   | 44,100             |
|                   | 110.0             | 57.7                | 14,500                     | 22,100       | 28,800        | 39,400              | 45,500*  | 45,500*            | 10,500                     | 18,200       | 24,900        | 35,900              | 37,100   | 38,300             |
|                   | 120.0             | 54.3                | 12,000                     | 18,900       | 25,000        | 35,000              | 40,500*  | 40,500*            | 8,500                      | 15,400       | 21,500        | 31,500              | 32,600   | 34,000             |
|                   | 130.0             | 50.6                | 10,000                     | 16,300       | 21,900        | 31,000              | 36,700*  | 36,700*            | 6,700                      | 13,000       | 18,600        | 27,800              | 28,800   | 30,100             |
|                   | 140.0             | 46.8                | 8,300                      | 14,100       | 19,200        | 27,700              | 33,100*  | 33,100*            | 5,300                      | 11,100       | 16,200        | 24,700              | 25,600   | 26,800             |
|                   | 150.0             | 42.8                | 6,800                      | 12,200       | 17,000        | 24,800              | 30,000*  | 30,000*            | 4,000                      | 9,400        | 14,200        | 22,000              | 22,900   | 24,000             |
|                   | 160.0             | 38.4                | 5,500                      | 10,600       | 15,000        | 22,300              | 27,200*  | 27,200*            | 3,000                      | 8,000        | 12,400        | 19,700              | 20,500   | 21,600             |
| 210'<br>(64.01 m) | 70.0              | 71.4                | 32,400                     | 44,800       | 56,200        | 74,400              | 78,400*  | 78,400*            | 25,800                     | 38,200       | 49,600        | 68,200              | 70,300   | 73,000             |
|                   | 80.0              | 68.5                | 25,800                     | 36,800       | 46,000        | 61,900              | 67,200*  | 67,200*            | 20,200                     | 31,100       | 40,400        | 56,300              | 58,000   | 60,400             |
|                   | 90.0              | 65.6                | 20,900                     | 30,500       | 38,500        | 52,300              | 57,600   | 57,600             | 16,000                     | 25,600       | 34,000        | 47,400              | 48,900   | 51,000             |
|                   | 100.0             | 62.5                | 17,100                     | 25,600       | 33,100        | 44,900              | 49,600   | 49,600             | 12,800                     | 21,200       | 28,700        | 40,600              | 41,900   | 43,700             |
|                   | 110.0             | 59.4                | 14,100                     | 21,700       | 28,500        | 39,000              | 43,300   | 43,300             | 10,200                     | 17,800       | 24,500        | 35,600              | 36,800   | 38,000             |
|                   | 120.0             | 56.2                | 11,700                     | 18,600       | 24,700        | 34,700              | 38,100   | 40,000*            | 8,100                      | 15,000       | 21,100        | 31,100              | 32,200   | 33,700             |
|                   | 130.0             | 52.8                | 9,600                      | 16,000       | 21,500        | 30,700              | 34,200   | 36,200*            | 6,400                      | 12,700       | 18,300        | 27,400              | 28,400   | 29,800             |
|                   | 140.0             | 49.3                | 7,900                      | 13,700       | 18,900        | 27,300              | 30,500   | 32,500*            | 4,900                      | 10,700       | 15,900        | 24,300              | 25,200   | 26,500             |
|                   | 150.0             | 45.6                | 6,500                      | 11,900       | 16,600        | 24,400              | 27,400   | 29,500*            | 3,700                      | 9,100        | 13,800        | 21,700              | 22,500   | 23,700             |
|                   | 160.0             | 41.7                | 5,200                      | 10,200       | 14,700        | 22,000              | 24,800   | 26,800*            | 2,600                      | 7,600        | 12,100        | 19,400              | 20,200   | 21,000             |
| 220'<br>(67.06 m) | 70.0              | 72.3                | 31,000                     | 44,500       | 55,900        | 73,100*             | 73,100*  | 73,100*            | 24,000                     | 37,900       | 49,200        | 67,900              | 69,900   | 72,700             |
|                   | 80.0              | 69.6                | 24,000                     | 36,500       | 45,700        | 61,600              | 64,900*  | 64,900*            | 19,000                     | 30,800       | 40,000        | 55,900              | 57,700   | 60,000             |
|                   | 90.0              | 66.8                | 20,000                     | 30,200       | 38,100        | 52,000              | 57,600*  | 57,600*            | 15,000                     | 25,200       | 33,700        | 47,000              | 48,600   | 50,600             |
|                   | 100.0             | 63.9                | 16,000                     | 25,300       | 32,800        | 44,600              | 49,300   | 50,400*            | 12,000                     | 20,900       | 28,400        | 40,200              | 41,500   | 43,400             |
|                   | 110.0             | 60.9                | 13,000                     | 21,400       | 28,100        | 38,700              | 42,900   | 44,500*            | 9,500                      | 17,500       | 24,200        | 35,200              | 36,400   | 37,600             |
|                   | 120.0             | 57.9                | 11,000                     | 18,200       | 24,300        | 34,300              | 37,700   | 39,500*            | 8,000                      | 14,700       | 20,800        | 30,800              | 31,900   | 33,300             |
|                   | 130.0             | 54.8                | 9,500                      | 15,600       | 21,200        | 30,300              | 33,800   | 34,600*            | 7,000                      | 12,300       | 17,900        | 27,100              | 28,100   | 29,400             |
|                   | 140.0             | 51.0                | 8,000                      | 13,500       | 18,500        | 27,300              | 30,500   | 32,500*            | 6,000                      | 11,000       | 15,500        | 23,500              | 24,500   | 25,500             |
|                   | 150.0             | 47.5                | 6,800                      | 11,900       | 16,600        | 24,400              | 27,400   | 29,500*            | 5,300                      | 9,200        | 13,800        | 21,700              | 22,500   | 23,700             |
|                   | 160.0             | 44.0                | 5,800                      | 10,200       | 14,700        | 22,000              | 24,800   | 26,800*            | 4,500                      | 8,000        | 12,600        | 19,400              | 20,200   | 21,000             |

**GENERAL INFORMATION ONLY**

**HC-278H Lift Crane Capacities - On Outriggers**

| Boom Length (ft.) | Load Radius (ft.) | Boom Angle (degree) | Capacities - On Outriggers Over Rear |         |          |            |                    |                     | Capacities - On Outriggers 360 Degree Rotation |         |          |            |                    |                     |
|-------------------|-------------------|---------------------|--------------------------------------|---------|----------|------------|--------------------|---------------------|--|---------|----------|------------|--------------------|---------------------|
|                   |                   |                     | 0 + 0                                | "A" + 0 | "AB" + 0 | "ABCD" + 0 | "ABCD" + "A" ctwt. | "ABCD" + "AB" ctwt. | 0 + 0  | "A" + 0 | "AB" + 0 | "ABCD" + 0 | "ABCD" + "A" ctwt. | "ABCD" + "AB" ctwt. |
|                   |                   |                     | ctwt.                                | ctwt.   | ctwt.    | ctwt.      | ctwt.              | ctwt.               | ctwt.  | ctwt.   | ctwt.    | ctwt.      | ctwt.              | ctwt.               |
| 220'<br>(67.06 m) | 140.0             | 51.5                | ←                                    | 13,400  | 18,500   | 27,000     | 30,200             | 31,200*             | 10,400   | 15,500  | 24,000   | 24,900     | 26,100             |                     |
|                   | 150.0             | 48.1                | ←                                    | 11,500  | 16,300   | 24,100     | 27,100             | 28,200*             | 8,700  | 13,500  | 21,300   | 22,200     | 23,300             |                     |
|                   | 160.0             | 44.5                | ←                                    | 9,900   | 14,300   | 21,600     | 24,400             | 25,500*             | 7,300  | 11,700  | 19,000   | 19,800     | 20,900             |                     |
|                   | 170.0             | 40.7                | ←                                    | 8,400   | 12,600   | 19,400     | 22,000             | 23,100*             | 6,000  | 10,200  | 17,000   | 17,700     | 18,800             |                     |
|                   | 180.0             | 36.5                | ←                                    | 7,200   | 11,100   | 17,500     | 20,000             | 20,900*             | 4,900  | 8,800   | 15,200   | 15,900     | 16,900             |                     |
|                   | 190.0             | 31.9                | ←                                    | 6,100   | 9,800    | 15,800     | 18,100             | 19,000*             | 3,900  | 7,600   | 13,700   | 14,300     | 15,200             |                     |
|                   | 200.0             | 26.5                | ←                                    | 5,100   | 8,600    | 14,300     | 16,500             | 17,200*             | 3,000  | 6,500   | 12,300   | 12,900     | 13,800             |                     |
|                   | 210.0             | 19.9                | ←                                    | 4,200   | 7,500    | 13,000     | 15,000             | 15,600*             | 2,200  | 5,600   | 11,000   | 11,600     | 12,400             |                     |
|                   | 220.0             | 9.7                 | ←                                    | 3,400   | 6,600    | 11,700     | 13,700             | 14,200*             | -  | 4,700   | 9,900    | 10,500     | 11,200             |                     |
|                   | 230'<br>(70.10 m) | 35.2                | 82.0                                 | ←       | 95,300*  | 95,300*    | 95,300*            | 95,300*             | 95,300*  | 95,300* | 95,300*  | 95,300*    | 95,300*            | 95,300*             |
| 40.0              |                   | 80.8                | ←                                    | 94,700* | 94,700*  | 94,700*    | 94,700*            | 94,700*             | 92,200   | 94,700* | 94,700*  | 94,700*    | 94,700*            |                     |
| 50.0              |                   | 78.3                | ←                                    | 74,200  | 88,800*  | 88,800*    | 88,800*            | 88,800*             | 64,600   | 81,500  | 88,800*  | 88,800*    | 88,800*            |                     |
| 60.0              |                   | 75.7                | ←                                    | 56,300  | 70,000   | 81,000*    | 81,000*            | 81,000*             | 48,200   | 62,000  | 81,000*  | 81,000*    | 81,000*            |                     |
| 70.0              |                   | 73.1                | ←                                    | 44,200  | 55,500   | 68,900*    | 68,900*            | 68,900*             | 37,500   | 48,900  | 67,600   | 68,900*    | 68,900*            |                     |
| 80.0              |                   | 70.5                | ←                                    | 36,200  | 45,300   | 60,900*    | 60,900*            | 60,900*             | 30,500   | 39,700  | 55,600   | 57,300     | 59,700             |                     |
| 90.0              |                   | 67.8                | ←                                    | 29,800  | 37,800   | 51,600     | 54,100*            | 54,100*             | 24,900   | 33,400  | 46,700   | 48,200     | 50,300             |                     |
| 100.0             |                   | 65.1                | ←                                    | 24,900  | 32,400   | 44,200     | 48,100*            | 48,100*             | 20,600   | 28,100  | 39,800   | 41,200     | 43,000             |                     |
| 110.0             |                   | 62.3                | ←                                    | 21,000  | 27,800   | 38,300     | 42,500             | 42,900*             | 17,100   | 23,800  | 34,900   | 36,100     | 37,200             |                     |
| 120.0             |                   | 59.5                | ←                                    | 17,900  | 24,000   | 34,000     | 35,800*            | 35,800*             | 14,300   | 20,400  | 30,400   | 31,500     | 33,000             |                     |
| 240'<br>(73.15 m) | 130.0             | 56.5                | ←                                    | 15,200  | 20,800   | 30,000     | 32,200*            | 32,200*             | 12,000   | 17,600  | 26,700   | 27,700     | 29,100             |                     |
|                   | 140.0             | 53.5                | ←                                    | 13,000  | 18,200   | 26,600     | 29,000*            | 29,000*             | 10,000   | 15,200  | 23,600   | 24,500     | 25,800             |                     |
|                   | 150.0             | 50.3                | ←                                    | 11,100  | 15,900   | 23,700     | 26,100*            | 26,100*             | 8,300  | 13,100  | 20,900   | 21,800     | 23,000             |                     |
|                   | 160.0             | 47.0                | ←                                    | 9,500   | 13,900   | 21,200     | 23,400*            | 23,400*             | 6,900  | 11,300  | 18,600   | 19,400     | 20,500             |                     |
|                   | 170.0             | 43.5                | ←                                    | 8,100   | 12,200   | 19,100     | 21,100*            | 21,100*             | 5,600  | 9,800   | 16,600   | 17,400     | 18,400             |                     |
|                   | 180.0             | 39.8                | ←                                    | 6,800   | 10,700   | 17,100     | 19,000*            | 19,000*             | 4,500  | 8,400   | 14,900   | 15,600     | 16,500             |                     |
|                   | 190.0             | 35.7                | ←                                    | 5,700   | 9,400    | 15,500     | 17,100*            | 17,100*             | 3,500  | 7,200   | 13,300   | 14,000     | 14,900             |                     |
|                   | 200.0             | 31.2                | ←                                    | 4,700   | 8,200    | 13,900     | 15,300*            | 15,300*             | 2,700  | 6,200   | 11,900   | 12,500     | 13,400             |                     |
|                   | 210.0             | 25.9                | ←                                    | 3,800   | 7,100    | 12,600     | 13,600*            | 13,600*             | -  | 5,200   | 10,600   | 11,200     | 12,100             |                     |
|                   | 220.0             | 19.5                | ←                                    | 3,000   | 6,200    | 11,400     | 12,200*            | 12,200*             | -  | 4,300   | 9,500    | 10,100     | 10,900             |                     |
| 230.0             | 9.5               | ←                   | 2,300                                | 5,300   | 10,300   | 10,900*    | 10,900*            | -                   | 3,600  | 8,500   | 9,000    | 9,800      |                    |                     |
| 240'<br>(73.15 m) | 36.6              | 82.0                | ←                                    | 86,600* | 86,600*  | 86,600*    | 86,600*            | 86,600*             | 86,600*  | 86,600* | 86,600*  | 86,600*    | 86,600*            |                     |
|                   | 40.0              | 81.2                | ←                                    | 86,000* | 86,000*  | 86,000*    | 86,000*            | 86,000*             | 86,000*  | 86,000* | 86,000*  | 86,000*    | 86,000*            |                     |
|                   | 50.0              | 78.7                | ←                                    | 73,900  | 83,300*  | 83,300*    | 83,300*            | 83,300*             | 64,300   | 81,200  | 83,300*  | 83,300*    | 83,300*            |                     |
|                   | 60.0              | 76.3                | ←                                    | 55,900  | 69,700   | 76,100*    | 76,100*            | 76,100*             | 47,900   | 61,700  | 76,100*  | 76,100*    | 76,100*            |                     |
|                   | 70.0              | 73.8                | ←                                    | 43,800  | 55,200   | 64,600*    | 64,600*            | 64,600*             | 37,200   | 48,600  | 64,600*  | 64,600*    | 64,600*            |                     |
|                   | 80.0              | 71.3                | ←                                    | 35,800  | 45,000   | 57,200*    | 57,200*            | 57,200*             | 30,200   | 39,300  | 55,200   | 57,000*    | 57,200*            |                     |
|                   | 90.0              | 68.8                | ←                                    | 29,500  | 37,400   | 50,700*    | 50,700*            | 50,700*             | 24,600   | 33,000  | 46,300   | 47,800     | 49,900             |                     |
|                   | 100.0             | 66.2                | ←                                    | 24,600  | 32,100   | 43,800     | 45,000*            | 45,000*             | 20,200   | 27,700  | 39,500   | 40,800     | 42,600             |                     |
|                   | 110.0             | 63.6                | ←                                    | 20,700  | 27,400   | 37,900     | 39,800*            | 39,800*             | 16,800   | 23,500  | 34,500   | 35,700     | 36,800             |                     |
|                   | 120.0             | 60.9                | ←                                    | 17,500  | 23,600   | 33,100*    | 33,100*            | 33,100*             | 14,000   | 20,100  | 30,100   | 31,200     | 32,600             |                     |
| 130.0             | 58.1              | ←                   | 14,900                               | 20,500  | 29,500*  | 29,500*    | 29,500*            | 11,600              | 17,200   | 26,400  | 27,400   | 28,700     |                    |                     |
| 140.0             | 55.2              | ←                   | 12,700                               | 17,800  | 26,200   | 26,300*    | 26,300*            | 9,700               | 14,900   | 23,200  | 24,200   | 25,400     |                    |                     |
| 150.0             | 52.3              | ←                   | 10,800                               | 15,500  | 23,400   | 23,500*    | 23,500*            | 8,000               | 12,800   | 20,600  | 21,400   | 22,600     |                    |                     |
| 160.0             | 49.2              | ←                   | 9,100                                | 13,600  | 20,900   | 21,000*    | 21,000*            | 6,500               | 11,000   | 18,300  | 19,100   | 20,100     |                    |                     |
| 170.0             | 46.0              | ←                   | 7,700                                | 11,900  | 18,700   | 18,700*    | 18,700*            | 5,300               | 9,400  | 16,300  | 17,000   | 18,000     |                    |                     |
| 180.0             | 42.5              | ←                   | 6,400                                | 10,400  | 16,700*  | 16,700*    | 16,700*            | 4,100               | 8,100  | 14,500  | 15,200   | 16,100     |                    |                     |

# HC-278H Lift Crane Capacities - On Outriggers

## GENERAL INFORMATION ONLY

| Boom Length (ft.) | Load Radius (ft.) | Boom Angle (degree) | Capacities - On Outriggers Over Rear |         |          |            |           |            | Capacities - On Outriggers 360 Degree Rotation |         |          |            |           |            |         |
|-------------------|-------------------|---------------------|--------------------------------------|---------|----------|------------|-----------|------------|--|---------|----------|------------|-----------|------------|---------|
|                   |                   |                     | 0 + 0                                | "A" + 0 | "AB" + 0 | "ABCD" + 0 | "A" ctwt. | "AB" ctwt. | 0 + 0  | "A" + 0 | "AB" + 0 | "ABCD" + 0 | "A" ctwt. | "AB" ctwt. |         |
|                   |                   |                     | ctwt.                                | ctwt.   | ctwt.    | ctwt.      |           |            | ctwt.  | ctwt.   | ctwt.    | ctwt.      | ctwt.     | ctwt.      |         |
| 240'<br>(73.15 m) | 190.0             | 38.9                | ←                                    | 5,300   | 9,000    | 14,800*    | 14,800*   | 14,800*    | 14,800*  | 3,200   | 6,900    | 12,900     | 13,600    | 14,500     |         |
|                   | 200.0             | 34.9                | ←                                    | 4,300   | 7,800    | 13,100*    | 13,100*   | 13,100*    | 2,300  | 5,800   | 11,500   | 12,200     | 13,000    |            |         |
|                   | 210.0             | 30.5                | ←                                    | 3,400   | 6,800    | 11,600*    | 11,600*   | 11,600*    | --   | 4,800   | 10,300   | 10,900     | 11,600*   |            |         |
|                   | 220.0             | 25.4                | ←                                    | 2,600   | 5,800    | 10,200*    | 10,200*   | 10,200*    | --   | 4,000   | 9,100    | 9,700      | 10,200*   |            |         |
|                   | 230.0             | 19.1                | ←                                    | --      | 4,900    | 8,900*     | 8,900*    | 8,900*     | --   | 3,200   | 8,100    | 8,100      | 8,700     |            |         |
|                   | 240.0             | 9.3                 | ←                                    | --      | 4,100    | 7,800*     | 7,800*    | 7,800*     | --   | 2,500   | 7,200    | 7,200      | 7,700     |            |         |
|                   | 250'<br>(76.20 m) | 38.0                | 82.0                                 | ←       | ←        | 78,700*    | 78,700*   | 78,700*    | 78,700*  | ←       | 78,700*  | 78,700*    | 78,700*   | 78,700*    | 78,700* |
|                   |                   | 40.0                | 81.5                                 | ←       | ←        | 78,700*    | 78,700*   | 78,700*    | 78,700*  | ←       | 78,700*  | 78,700*    | 78,700*   | 78,700*    | 78,700* |
|                   |                   | 50.0                | 79.2                                 | ←       | ←        | 76,700*    | 76,700*   | 76,700*    | 76,700*  | ←       | 76,700*  | 76,700*    | 76,700*   | 76,700*    | 76,700* |
|                   |                   | 60.0                | 76.9                                 | ←       | ←        | 69,400     | 68,400    | 72,400*    | 72,400*  | ←       | 61,400   | 72,400*    | 72,400*   | 72,400*    | 72,400* |
| 70.0              |                   | 74.5                | ←                                    | ←       | 54,900   | 54,900     | 66,700*   | 66,700*    | ←  | 48,200  | 66,700*  | 66,700*    | 66,700*   | 66,700*    |         |
| 80.0              |                   | 72.1                | ←                                    | ←       | 44,600   | 44,600     | 60,500    | 61,100*    | ←  | 39,000  | 54,900   | 54,900     | 56,600    | 59,000     |         |
| 90.0              |                   | 69.7                | ←                                    | ←       | 37,000   | 37,000     | 50,900    | 55,900*    | ←  | 32,600  | 45,900   | 45,900     | 47,500    | 49,200     |         |
| 100.0             |                   | 67.2                | ←                                    | ←       | 31,700   | 27,000     | 43,400    | 48,100     | ←  | 27,300  | 39,000   | 39,000     | 40,400    | 42,200     |         |
| 110.0             |                   | 64.7                | ←                                    | ←       | 27,000   | 23,200     | 37,500    | 41,700     | ←  | 23,100  | 34,100   | 34,100     | 35,300    | 36,900     |         |
| 120.0             |                   | 62.1                | ←                                    | ←       | 23,200   | 20,000     | 33,200    | 37,000     | ←  | 19,600  | 29,600   | 29,600     | 30,700    | 32,200     |         |
| 260'<br>(79.25 m) | 130.0             | 59.5                | ←                                    | ←       | 20,000   | 17,400     | 29,200    | 32,700     | ←  | 16,800  | 25,900   | 25,900     | 26,900    | 28,300     |         |
|                   | 140.0             | 56.8                | ←                                    | ←       | 17,400   | 15,100     | 25,900    | 29,000     | ←  | 14,400  | 22,800   | 22,800     | 23,700    | 25,000     |         |
|                   | 150.0             | 54.0                | ←                                    | ←       | 15,100   | 13,100     | 22,900    | 25,900     | ←  | 12,300  | 20,100   | 20,100     | 21,000    | 22,100     |         |
|                   | 160.0             | 51.1                | ←                                    | ←       | 13,100   | 11,400     | 20,400    | 23,200     | ←  | 10,500  | 17,800   | 17,800     | 18,600    | 19,700     |         |
|                   | 170.0             | 48.1                | ←                                    | ←       | 11,400   | 9,900      | 18,200    | 20,800     | ←  | 9,000   | 15,800   | 15,800     | 16,600    | 17,600     |         |
|                   | 180.0             | 45.0                | ←                                    | ←       | 9,900    | 8,600      | 16,300    | 18,900     | ←  | 7,600   | 14,000   | 14,000     | 14,700    | 15,700     |         |
|                   | 190.0             | 41.6                | ←                                    | ←       | 8,600    | 7,400      | 14,600    | 16,900     | ←  | 6,400   | 12,500   | 12,500     | 13,100    | 14,000     |         |
|                   | 200.0             | 38.1                | ←                                    | ←       | 7,400    | 6,300      | 13,100    | 15,300     | ←  | 5,300   | 11,000   | 11,000     | 11,700    | 12,500     |         |
|                   | 210.0             | 34.2                | ←                                    | ←       | 6,300    | 5,300      | 11,700    | 13,800     | ←  | 4,300   | 9,800    | 9,800      | 10,400    | 11,200     |         |
|                   | 220.0             | 29.8                | ←                                    | ←       | 5,300    | 4,400      | 10,500    | 12,500     | ←  | 3,500   | 8,700    | 8,700      | 9,200     | 10,000     |         |
| 230.0             | 24.9              | ←                   | ←                                    | 4,400   | 3,700    | 9,400      | 11,300    | ←          | 2,700  | 7,600   | 7,600    | 8,200      | 8,900     |            |         |
| 240.0             | 18.7              | ←                   | ←                                    | 3,700   | 3,000    | 8,400      | 10,200    | ←          | --   | 6,700   | 6,700    | 7,200      | 7,900     |            |         |
| 250.0             | 9.1               | ←                   | ←                                    | 2,900   | 2,900    | 7,500      | 9,200     | ←          | --   | 5,800   | 5,800    | 6,300      | 7,000     |            |         |
| 260'<br>(79.25 m) | 39.4              | 82.0                | ←                                    | ←       | 69,100*  | 69,100*    | 69,100*   | 69,100*    | ←  | 69,100* | 69,100*  | 69,100*    | 69,100*   | 69,100*    |         |
|                   | 40.0              | 81.9                | ←                                    | ←       | 69,100*  | 69,100*    | 69,100*   | 69,100*    | ←  | 69,100* | 69,100*  | 69,100*    | 69,100*   | 69,100*    |         |
|                   | 50.0              | 79.6                | ←                                    | ←       | 68,000*  | 68,000*    | 68,000*   | 68,000*    | ←  | 68,000* | 68,000*  | 68,000*    | 68,000*   | 68,000*    |         |
|                   | 60.0              | 77.4                | ←                                    | ←       | 66,900*  | 66,900*    | 66,900*   | 66,900*    | ←  | 61,100  | 66,900*  | 66,900*    | 66,900*   | 66,900*    |         |
|                   | 70.0              | 75.1                | ←                                    | ←       | 54,500   | 54,500     | 61,900*   | 61,900*    | ←  | 47,900  | 61,900*  | 61,900*    | 61,900*   | 61,900*    |         |
|                   | 80.0              | 72.8                | ←                                    | ←       | 44,300   | 44,300     | 57,200*   | 57,200*    | ←  | 38,600  | 54,500   | 54,500     | 56,300    | 57,200*    |         |
|                   | 90.0              | 70.5                | ←                                    | ←       | 36,700   | 36,700     | 50,500    | 52,900*    | ←  | 32,300  | 45,600   | 45,600     | 47,100    | 49,100     |         |
|                   | 100.0             | 68.1                | ←                                    | ←       | 31,300   | 31,300     | 43,000    | 47,700     | ←  | 27,000  | 38,700   | 38,700     | 40,000    | 41,800     |         |
|                   | 110.0             | 65.7                | ←                                    | ←       | 26,700   | 26,700     | 37,100    | 41,300     | ←  | 22,000  | 33,800   | 33,800     | 35,000    | 36,600     |         |
|                   | 120.0             | 63.3                | ←                                    | ←       | 22,800   | 22,800     | 32,800    | 36,700     | ←  | 19,300  | 29,300   | 29,300     | 30,400    | 31,900     |         |
| 130.0             | 60.8              | ←                   | ←                                    | 19,700  | 19,700   | 28,800     | 32,300    | ←          | 16,400   | 25,600  | 25,600   | 26,600     | 27,900    |            |         |
| 140.0             | 58.2              | ←                   | ←                                    | 17,000  | 17,000   | 25,400     | 28,700    | ←          | 14,000   | 22,400  | 22,400   | 23,400     | 24,600    |            |         |
| 150.0             | 55.6              | ←                   | ←                                    | 14,700  | 14,700   | 22,500     | 25,500    | ←          | 11,900   | 19,800  | 19,800   | 20,600     | 21,800    |            |         |
| 160.0             | 52.9              | ←                   | ←                                    | 12,800  | 12,800   | 20,000     | 22,800    | ←          | 10,200   | 17,400  | 17,400   | 18,200     | 19,300    |            |         |
| 170.0             | 50.1              | ←                   | ←                                    | 11,000  | 11,000   | 17,900     | 20,500    | ←          | 8,600  | 15,400  | 15,400   | 16,200     | 17,200    |            |         |
| 180.0             | 47.1              | ←                   | ←                                    | 9,500   | 9,500    | 15,900     | 18,400    | ←          | 7,200  | 13,700  | 13,700   | 14,400     | 15,300    |            |         |
| 190.0             | 44.1              | ←                   | ←                                    | 8,200   | 8,200    | 14,200     | 16,600    | ←          | 6,000  | 12,100  | 12,100   | 12,700     | 13,600    |            |         |

# HC-278H Lift Crane Capacities - On Outriggers

| Boom Length (ft.) | Load Radius (ft.) | Boom Angle (degree) | Capacities - On Outriggers Over Rear |         |          |            |              |               | Capacities - On Outriggers 360 Degree Rotation |         |          |            |              |               |         |
|-------------------|-------------------|---------------------|--------------------------------------|---------|----------|------------|--------------|---------------|--|---------|----------|------------|--------------|---------------|---------|
|                   |                   |                     | 0 + 0                                | "A" + 0 | "AB" + 0 | "ABCD" + 0 | "ABCD" + "A" | "ABCD" + "AB" | 0 + 0  | "A" + 0 | "AB" + 0 | "ABCD" + 0 | "ABCD" + "A" | "ABCD" + "AB" |         |
|                   |                   |                     | ctwt.                                | ctwt.   | ctwt.    | ctwt.      | ctwt.        | ctwt.         | ctwt.  | ctwt.   | ctwt.    | ctwt.      | ctwt.        | ctwt.         | ctwt.   |
| 260'<br>(79.25 m) | 200.0             | 40.8                | ←                                    | ←       | 7,000    | 12,700     | 14,900       | 16,100*       | ←  | ←       | 4,900    | 10,700     | 11,300       | 12,200        |         |
|                   | 210.0             | 37.3                | ←                                    | ←       | 5,900    | 11,400     | 13,400       | 14,500*       | ←  | ←       | 4,000    | 9,400      | 10,000       | 10,800        |         |
|                   | 220.0             | 33.5                | ←                                    | ←       | 4,900    | 10,100     | 12,100       | 13,100*       | ←  | ←       | 3,100    | 8,300      | 8,800        | 9,600         |         |
|                   | 230.0             | 29.3                | ←                                    | ←       | 4,100    | 9,000      | 10,900       | 11,800*       | ←  | ←       | 2,300    | 7,200      | 7,800        | 8,500         |         |
|                   | 240.0             | 24.4                | ←                                    | ←       | 3,300    | 8,000      | 9,800        | 10,600*       | ←  | ←       | --       | 6,300      | 6,800        | 7,500         |         |
|                   | 250.0             | 18.3                | ←                                    | ←       | 2,500    | 7,100      | 8,800        | 9,500*        | ←  | ←       | --       | 5,500      | 6,000        | 6,600         |         |
|                   | 260.0             | 9.0                 | ←                                    | ←       | --       | 6,200      | 7,900        | 8,600*        | ←  | ←       | --       | 4,700      | 5,200        | 5,800         |         |
|                   | 270'<br>(82.30 m) | 40.7                | 82.0                                 | ←       | ←        | 63,200*    | 63,200*      | 63,200*       | 63,200*  | ←       | ←        | 63,200*    | 63,200*      | 63,200*       | 63,200* |
|                   |                   | 50.0                | 80.0                                 | ←       | ←        | 62,100*    | 62,100*      | 62,100*       | 62,100*  | ←       | ←        | 62,100*    | 62,100*      | 62,100*       | 62,100* |
|                   |                   | 60.0                | 77.8                                 | ←       | ←        | 61,300*    | 61,300*      | 61,300*       | 61,300*  | ←       | ←        | 60,800     | 61,300*      | 61,300*       | 61,300* |
| 70.0              |                   | 75.7                | ←                                    | ←       | 54,200   | 56,700*    | 56,700*      | 56,700*       | ←  | ←       | 47,600   | 56,700*    | 56,700*      | 56,700*       |         |
| 80.0              |                   | 73.5                | ←                                    | ←       | 43,900   | 52,400*    | 52,400*      | 52,400*       | ←  | ←       | 38,300   | 52,400*    | 52,400*      | 52,400*       |         |
| 90.0              |                   | 71.2                | ←                                    | ←       | 36,900   | 48,200*    | 48,200*      | 48,200*       | ←  | ←       | 32,000   | 48,200*    | 48,200*      | 48,200*       |         |
| 100.0             |                   | 69.0                | ←                                    | ←       | 31,000   | 42,700     | 44,500*      | 44,500*       | ←  | ←       | 26,600   | 42,700     | 44,500*      | 44,500*       |         |
| 110.0             |                   | 66.7                | ←                                    | ←       | 26,300   | 36,700     | 40,900*      | 40,900*       | ←  | ←       | 22,400   | 36,700     | 40,900*      | 40,900*       |         |
| 120.0             |                   | 64.4                | ←                                    | ←       | 22,500   | 32,500     | 35,300*      | 35,300*       | ←  | ←       | 18,900   | 32,500     | 35,300*      | 35,300*       |         |
| 130.0             |                   | 62.0                | ←                                    | ←       | 19,300   | 28,500     | 32,000       | 32,600*       | ←  | ←       | 16,100   | 28,500     | 32,000       | 32,600*       |         |
| 280'<br>(85.34 m) | 140.0             | 59.5                | ←                                    | ←       | 16,600   | 25,100     | 28,300       | 29,700*       | ←  | ←       | 13,600   | 25,100     | 28,300       | 29,700*       |         |
|                   | 150.0             | 57.1                | ←                                    | ←       | 14,400   | 22,200     | 25,200       | 26,600*       | ←  | ←       | 11,600   | 22,200     | 25,200       | 26,600*       |         |
|                   | 160.0             | 54.5                | ←                                    | ←       | 12,400   | 19,700     | 22,500       | 23,800*       | ←  | ←       | 9,800    | 19,700     | 22,500       | 23,800*       |         |
|                   | 170.0             | 51.8                | ←                                    | ←       | 10,700   | 17,500     | 20,100       | 21,400*       | ←  | ←       | 8,200    | 17,500     | 20,100       | 21,400*       |         |
|                   | 180.0             | 49.1                | ←                                    | ←       | 9,100    | 15,600     | 18,000       | 19,300*       | ←  | ←       | 6,900    | 15,600     | 18,000       | 19,300*       |         |
|                   | 190.0             | 46.2                | ←                                    | ←       | 7,800    | 13,900     | 16,200       | 17,300*       | ←  | ←       | 5,600    | 13,900     | 16,200       | 17,300*       |         |
|                   | 200.0             | 43.2                | ←                                    | ←       | 6,600    | 12,300     | 14,500       | 15,600*       | ←  | ←       | 4,600    | 12,300     | 14,500       | 15,600*       |         |
|                   | 210.0             | 40.0                | ←                                    | ←       | 5,500    | 11,000     | 13,100       | 14,000*       | ←  | ←       | 3,600    | 11,000     | 13,100       | 14,000*       |         |
|                   | 220.0             | 36.6                | ←                                    | ←       | 4,600    | 9,700      | 11,700       | 12,600*       | ←  | ←       | 2,700    | 9,700      | 11,700       | 12,600*       |         |
|                   | 230.0             | 32.8                | ←                                    | ←       | 3,700    | 8,600      | 10,500       | 11,300*       | ←  | ←       | --       | 8,500      | 9,200        | 9,200         |         |
| 240.0             | 28.7              | ←                   | ←                                    | 2,900   | 7,600    | 9,400      | 10,200*      | ←             | ←  | --      | 6,900    | 7,400      | 7,400        |               |         |
| 250.0             | 23.9              | ←                   | ←                                    | 2,200   | 6,700    | 8,400      | 9,100*       | ←             | ←  | --      | 5,900    | 6,400      | 6,400        |               |         |
| 260.0             | 18.0              | ←                   | ←                                    | --      | 5,800    | 7,500      | 8,100*       | ←             | ←  | --      | 4,300    | 4,800      | 4,800        |               |         |
| 270.0             | 8.8               | ←                   | ←                                    | --      | 5,100    | 6,700      | 7,200*       | ←             | ←  | --      | 3,600    | 4,000      | 4,000        |               |         |
| 280'<br>(85.34 m) | 42.1              | 82.0                | ←                                    | ←       | 57,800*  | 57,800*    | 57,800*      | 57,800*       | ←  | ←       | 57,800*  | 57,800*    | 57,800*      | 57,800*       |         |
|                   | 50.0              | 80.4                | ←                                    | ←       | 57,100*  | 57,100*    | 57,100*      | 57,100*       | ←  | ←       | 57,100*  | 57,100*    | 57,100*      | 57,100*       |         |
|                   | 60.0              | 78.3                | ←                                    | ←       | 56,000*  | 56,000*    | 56,000*      | 56,000*       | ←  | ←       | 56,000*  | 56,000*    | 56,000*      | 56,000*       |         |
|                   | 70.0              | 76.2                | ←                                    | ←       | 52,000*  | 52,000*    | 52,000*      | 52,000*       | ←  | ←       | 52,000*  | 52,000*    | 52,000*      | 52,000*       |         |
|                   | 80.0              | 74.1                | ←                                    | ←       | 48,100*  | 48,100*    | 48,100*      | 48,100*       | ←  | ←       | 48,100*  | 48,100*    | 48,100*      | 48,100*       |         |
|                   | 90.0              | 71.9                | ←                                    | ←       | 44,200*  | 44,200*    | 44,200*      | 44,200*       | ←  | ←       | 44,200*  | 44,200*    | 44,200*      | 44,200*       |         |
|                   | 100.0             | 69.8                | ←                                    | ←       | 40,600*  | 40,600*    | 40,600*      | 40,600*       | ←  | ←       | 39,300   | 40,600*    | 40,600*      | 40,600*       |         |
|                   | 110.0             | 67.6                | ←                                    | ←       | 35,000*  | 35,000*    | 35,000*      | 35,000*       | ←  | ←       | 33,000   | 35,000*    | 35,000*      | 35,000*       |         |
|                   | 120.0             | 65.3                | ←                                    | ←       | 32,100   | 32,100     | 32,400*      | 32,400*       | ←  | ←       | 29,700   | 32,400*    | 32,400*      | 32,400*       |         |
|                   | 130.0             | 63.1                | ←                                    | ←       | 28,100   | 28,100     | 29,900*      | 29,900*       | ←  | ←       | 24,800   | 29,900*    | 29,900*      | 29,900*       |         |
| 140.0             | 60.7              | ←                   | ←                                    | 24,700  | 24,700   | 27,700*    | 27,700*      | ←             | ←  | 21,700  | 27,700*  | 27,700*    | 27,700*      |               |         |
| 150.0             | 58.4              | ←                   | ←                                    | 21,800  | 21,800   | 24,800     | 25,600*      | ←             | ←  | 19,000  | 24,800   | 24,800     | 25,600*      |               |         |
| 160.0             | 55.9              | ←                   | ←                                    | 19,300  | 19,300   | 22,100     | 23,300*      | ←             | ←  | 16,700  | 22,100   | 22,100     | 23,300*      |               |         |
| 170.0             | 53.4              | ←                   | ←                                    | 17,100  | 17,100   | 19,700     | 20,900*      | ←             | ←  | 14,700  | 19,700   | 19,700     | 20,900*      |               |         |
| 180.0             | 50.8              | ←                   | ←                                    | 15,200  | 15,200   | 17,600     | 18,800*      | ←             | ←  | 12,900  | 17,600   | 17,600     | 18,800*      |               |         |

# HC-278H Lift Crane Capacities - On Outriggers

GENERAL INFORMATION ONLY

| Boom Length (ft.) | Load Radius (ft.) | Boom Angle (degree) | Capacities - On Outriggers |                  |                   |                     |                  |                   | Capacities - On Outriggers |                  |                   |                     |                  |                   |
|-------------------|-------------------|---------------------|----------------------------|------------------|-------------------|---------------------|------------------|-------------------|----------------------------|------------------|-------------------|---------------------|------------------|-------------------|
|                   |                   |                     | Over Rear                  |                  |                   | 360 Degree Rotation |                  |                   | Over Rear                  |                  |                   | 360 Degree Rotation |                  |                   |
|                   |                   |                     | 0 + 0<br>ctwt.             | "A" + 0<br>ctwt. | "AB" + 0<br>ctwt. | "ABCD" + 0<br>ctwt. | "A" + 0<br>ctwt. | "AB" + 0<br>ctwt. | "ABCD" + 0<br>ctwt.        | "A" + 0<br>ctwt. | "AB" + 0<br>ctwt. | "ABCD" + 0<br>ctwt. | "A" + 0<br>ctwt. | "AB" + 0<br>ctwt. |
| 280'<br>(85.34 m) | 190.0             | 48.1                | ←                          | ←                | ←                 | 13,500              | 15,800           | 16,900*           | ←                          | ←                | ←                 | 11,300              | 12,000           | 12,900            |
|                   | 200.0             | 45.3                | ←                          | ←                | ←                 | 11,900              | 14,100           | 15,100*           | ←                          | ←                | ←                 | 9,900               | 10,500           | 11,400            |
|                   | 210.0             | 42.4                | ←                          | ←                | ←                 | 10,600              | 12,700           | 13,600*           | ←                          | ←                | ←                 | 8,600               | 9,200            | 10,000            |
|                   | 220.0             | 39.2                | ←                          | ←                | ←                 | 9,300               | 11,300           | 12,100*           | ←                          | ←                | ←                 | 7,500               | 8,100            | 8,800             |
|                   | 230.0             | 35.9                | ←                          | ←                | ←                 | 8,200               | 10,100           | 10,900*           | ←                          | ←                | ←                 | 6,500               | 7,000            | 7,700             |
|                   | 240.0             | 32.2                | ←                          | ←                | ←                 | 7,200               | 9,000            | 9,700*            | ←                          | ←                | ←                 | 5,500               | 6,100            | 6,800             |
|                   | 250.0             | 28.2                | ←                          | ←                | ←                 | 6,300               | 8,000            | 8,600*            | ←                          | ←                | ←                 | 4,700               | 5,200            | 5,800             |
|                   | 260.0             | 23.5                | ←                          | ←                | ←                 | 5,400               | 7,100            | 7,600*            | ←                          | ←                | ←                 | 3,900               | 4,400            | 5,000             |
|                   | 270.0             | 17.6                | ←                          | ←                | ←                 | 4,700               | 6,300            | 6,700*            | ←                          | ←                | ←                 | 3,200               | 3,600            | 4,300             |
|                   | 280.0             | 8.6                 | ←                          | ←                | ←                 | 4,000               | 5,500            | 5,800*            | ←                          | ←                | ←                 | 2,500               | 3,000            | 3,600             |
| 290'<br>(88.39 m) | 43.5              | 82.0                | ←                          | ←                | ←                 | 53,200*             | 53,200*          | 53,200*           | ←                          | ←                | ←                 | 53,200*             | 53,200*          | 53,200*           |
|                   | 50.0              | 80.7                | ←                          | ←                | ←                 | 52,500*             | 52,500*          | 52,500*           | ←                          | ←                | ←                 | 52,500*             | 52,500*          | 52,500*           |
|                   | 60.0              | 78.7                | ←                          | ←                | ←                 | 51,500*             | 51,500*          | 51,500*           | ←                          | ←                | ←                 | 51,500*             | 51,500*          | 51,500*           |
|                   | 70.0              | 76.7                | ←                          | ←                | ←                 | 47,700*             | 47,700*          | 47,700*           | ←                          | ←                | ←                 | 47,700*             | 47,700*          | 47,700*           |
|                   | 80.0              | 74.6                | ←                          | ←                | ←                 | 44,100*             | 44,100*          | 44,100*           | ←                          | ←                | ←                 | 44,100*             | 44,100*          | 44,100*           |
|                   | 90.0              | 72.6                | ←                          | ←                | ←                 | 40,500*             | 40,500*          | 40,500*           | ←                          | ←                | ←                 | 40,500*             | 40,500*          | 40,500*           |
|                   | 100.0             | 70.5                | ←                          | ←                | ←                 | 34,700*             | 34,700*          | 34,700*           | ←                          | ←                | ←                 | 34,700*             | 34,700*          | 34,700*           |
|                   | 110.0             | 68.4                | ←                          | ←                | ←                 | 32,100*             | 32,100*          | 32,100*           | ←                          | ←                | ←                 | 32,100*             | 32,100*          | 32,100*           |
|                   | 120.0             | 66.2                | ←                          | ←                | ←                 | 29,700*             | 29,700*          | 29,700*           | ←                          | ←                | ←                 | 29,700*             | 29,700*          | 29,700*           |
|                   | 130.0             | 64.1                | ←                          | ←                | ←                 | 27,400*             | 27,400*          | 27,400*           | ←                          | ←                | ←                 | 27,400*             | 27,400*          | 27,400*           |
| 300'<br>(91.44 m) | 140.0             | 61.8                | ←                          | ←                | ←                 | 24,300              | 25,400*          | 25,400*           | ←                          | ←                | ←                 | 21,300              | 22,300           | 23,500            |
|                   | 150.0             | 59.6                | ←                          | ←                | ←                 | 21,400              | 23,500*          | 23,500*           | ←                          | ←                | ←                 | 18,600              | 19,500           | 20,700            |
|                   | 160.0             | 57.3                | ←                          | ←                | ←                 | 18,900              | 21,700           | 21,800*           | ←                          | ←                | ←                 | 16,300              | 17,100           | 18,200            |
|                   | 170.0             | 54.9                | ←                          | ←                | ←                 | 16,700              | 19,300           | 20,200*           | ←                          | ←                | ←                 | 14,300              | 15,000           | 16,100            |
|                   | 180.0             | 52.4                | ←                          | ←                | ←                 | 14,800              | 17,300           | 18,300*           | ←                          | ←                | ←                 | 12,500              | 13,200           | 14,200            |
|                   | 190.0             | 49.9                | ←                          | ←                | ←                 | 13,100              | 15,400           | 16,400*           | ←                          | ←                | ←                 | 10,900              | 11,600           | 12,500            |
|                   | 200.0             | 47.3                | ←                          | ←                | ←                 | 11,600              | 13,800           | 14,600*           | ←                          | ←                | ←                 | 9,500               | 10,200           | 11,000            |
|                   | 210.0             | 44.5                | ←                          | ←                | ←                 | 10,200              | 12,300           | 13,100*           | ←                          | ←                | ←                 | 8,300               | 8,900            | 9,700             |
|                   | 220.0             | 41.6                | ←                          | ←                | ←                 | 9,000               | 10,900           | 11,700*           | ←                          | ←                | ←                 | 7,100               | 7,700            | 8,500             |
|                   | 230.0             | 38.5                | ←                          | ←                | ←                 | 7,800               | 9,700            | 10,400*           | ←                          | ←                | ←                 | 6,100               | 6,600            | 7,400             |
| 300'<br>(91.44 m) | 240.0             | 35.2                | ←                          | ←                | ←                 | 6,800               | 8,600            | 9,200*            | ←                          | ←                | ←                 | 5,100               | 5,700            | 6,400             |
|                   | 250.0             | 31.7                | ←                          | ←                | ←                 | 5,900               | 7,600            | 8,100*            | ←                          | ←                | ←                 | 4,300               | 4,800            | 5,500             |
|                   | 260.0             | 27.7                | ←                          | ←                | ←                 | 5,000               | 6,700            | 7,100*            | ←                          | ←                | ←                 | 3,500               | 4,000            | 4,600             |
|                   | 270.0             | 23.1                | ←                          | ←                | ←                 | 4,300               | 5,900            | 6,200*            | ←                          | ←                | ←                 | 2,800               | 3,200            | 3,900             |
|                   | 280.0             | 17.3                | ←                          | ←                | ←                 | 3,600               | 5,100            | 5,300*            | ←                          | ←                | ←                 | 2,100               | 2,600            | 3,200             |
|                   | 290.0             | 8.5                 | ←                          | ←                | ←                 | 2,900               | 4,400            | 4,600*            | ←                          | ←                | ←                 | 1,500               | 2,000            | 2,500             |
|                   | 44.9              | 82.0                | ←                          | ←                | ←                 | 49,000*             | 49,000*          | 49,000*           | ←                          | ←                | ←                 | 49,000*             | 49,000*          | 49,000*           |
|                   | 50.0              | 81.0                | ←                          | ←                | ←                 | 48,400*             | 48,400*          | 48,400*           | ←                          | ←                | ←                 | 48,400*             | 48,400*          | 48,400*           |
|                   | 60.0              | 79.1                | ←                          | ←                | ←                 | 47,500*             | 47,500*          | 47,500*           | ←                          | ←                | ←                 | 47,500*             | 47,500*          | 47,500*           |
|                   | 70.0              | 77.1                | ←                          | ←                | ←                 | 43,900*             | 43,900*          | 43,900*           | ←                          | ←                | ←                 | 43,900*             | 43,900*          | 43,900*           |
| 80.0              | 75.2              | ←                   | ←                          | ←                | 40,300*           | 40,300*             | 40,300*          | ←                 | ←                          | ←                | 40,300*           | 40,300*             | 40,300*          |                   |
| 90.0              | 73.2              | ←                   | ←                          | ←                | 34,300*           | 34,300*             | 34,300*          | ←                 | ←                          | ←                | 34,300*           | 34,300*             | 34,300*          |                   |
| 100.0             | 71.2              | ←                   | ←                          | ←                | 31,700*           | 31,700*             | 31,700*          | ←                 | ←                          | ←                | 31,700*           | 31,700*             | 31,700*          |                   |
| 110.0             | 69.1              | ←                   | ←                          | ←                | 29,300*           | 29,300*             | 29,300*          | ←                 | ←                          | ←                | 29,300*           | 29,300*             | 29,300*          |                   |
| 120.0             | 67.1              | ←                   | ←                          | ←                | 27,100*           | 27,100*             | 27,100*          | ←                 | ←                          | ←                | 27,100*           | 27,100*             | 27,100*          |                   |
| 130.0             | 65.0              | ←                   | ←                          | ←                | 25,100*           | 25,100*             | 25,100*          | ←                 | ←                          | ←                | 24,100            | 25,100*             | 25,100*          |                   |

**HC-278H Lift Crane Capacities - On Outriggers**

| Boom Length (ft.) | Load Radius (ft.) | Boom Angle (degree) | Capacities - On Outriggers Over Rear |         |          |            |                   | Capacities - On Outriggers 360 Degree Rotation |         |          |            |                   |                    |
|-------------------|-------------------|---------------------|--------------------------------------|---------|----------|------------|-------------------|--|---------|----------|------------|-------------------|--------------------|
|                   |                   |                     | 0 + 0                                | "A" + 0 | "AB" + 0 | "ABCD" + 0 | "ABCD" + "A" cwt. | 0 + 0  | "A" + 0 | "AB" + 0 | "ABCD" + 0 | "ABCD" + "A" cwt. | "ABCD" + "AB" cwt. |
|                   |                   |                     | cwt.                                 | cwt.    | cwt.     | cwt.       | cwt.              | cwt.   | cwt.    | cwt.     | cwt.       | cwt.              | cwt.               |
| 300'<br>(91.44 m) | 140.0             | 62.9                | ←                                    | ←       | ←        | 23,200*    | 23,200*           | 23,200*  | 21,000  | 21,000   | 21,000     | 23,100            |                    |
|                   | 150.0             | 60.7                | ←                                    | ←       | ←        | 21,500*    | 21,500*           | 18,300   | 18,300  | 18,300   | 20,300     |                   |                    |
|                   | 160.0             | 58.5                | ←                                    | ←       | ←        | 19,800*    | 19,800*           | 15,900   | 15,900  | 15,900   | 17,800     |                   |                    |
|                   | 170.0             | 56.2                | ←                                    | ←       | ←        | 18,500*    | 18,500*           | 13,900   | 13,900  | 14,700   | 15,700     |                   |                    |
|                   | 180.0             | 53.9                | ←                                    | ←       | ←        | 16,900     | 16,900            | 12,100   | 12,100  | 12,800   | 13,800     |                   |                    |
|                   | 190.0             | 51.5                | ←                                    | ←       | ←        | 15,000     | 15,000            | 10,500   | 10,500  | 11,200   | 12,100     |                   |                    |
|                   | 200.0             | 49.0                | ←                                    | ←       | ←        | 13,400     | 14,200*           | 9,100  | 9,100   | 9,800    | 10,600     |                   |                    |
|                   | 210.0             | 46.4                | ←                                    | ←       | ←        | 11,900     | 12,600*           | 7,900  | 7,900   | 8,500    | 9,300      |                   |                    |
|                   | 220.0             | 43.7                | ←                                    | ←       | ←        | 10,600     | 11,200*           | 7,300  | 7,300   | 7,300    | 8,100      |                   |                    |
|                   | 230.0             | 40.9                | ←                                    | ←       | ←        | 9,300      | 9,900*            | 6,700  | 6,700   | 6,200    | 7,000      |                   |                    |
|                   | 240.0             | 37.9                | ←                                    | ←       | ←        | 8,200      | 8,700*            | 6,200  | 6,200   | 5,300    | 6,000      |                   |                    |
|                   | 250.0             | 34.6                | ←                                    | ←       | ←        | 7,200      | 7,600*            | 5,700  | 5,700   | 4,400    | 5,100      |                   |                    |
|                   | 260.0             | 31.1                | ←                                    | ←       | ←        | 6,300      | 6,600*            | 5,200  | 5,200   | 3,600    | 4,200      |                   |                    |
|                   | 270.0             | 27.2                | ←                                    | ←       | ←        | 5,500      | 5,700*            | 4,200  | 4,200   | 2,800    | 3,500      |                   |                    |
|                   | 280.0             | 22.7                | ←                                    | ←       | ←        | 4,700      | 4,800*            | 3,100  | 3,100   | 2,200    | 2,800      |                   |                    |
| 290.0             | 17.0              | ←                   | ←                                    | ←       | 4,000    | 4,100*     | 2,500             | 2,500  | 2,200   | 2,800    |            |                   |                    |
| 300.0             | 8.3               | ←                   | ←                                    | ←       | 3,300    | 3,300*     | --                | --   | --      | 2,100    |            |                   |                    |
| 310'<br>(94.49 m) | 46.3              | 82.0                | N/A                                  | N/A     | N/A      | 45,100*    | 45,100*           | 45,100*  | 45,100* | 45,100*  | 45,100*    |                   |                    |
|                   | 50.0              | 81.3                | ←                                    | ←       | ←        | 44,800*    | 44,800*           | 44,800*  | 44,800* | 44,800*  | 44,800*    |                   |                    |
|                   | 60.0              | 79.4                | ←                                    | ←       | ←        | 43,700*    | 43,700*           | 43,700*  | 43,700* | 43,700*  | 43,700*    |                   |                    |
|                   | 70.0              | 77.5                | ←                                    | ←       | ←        | 40,400*    | 40,400*           | 40,400*  | 40,400* | 40,400*  | 40,400*    |                   |                    |
|                   | 80.0              | 75.6                | ←                                    | ←       | ←        | 34,400*    | 34,400*           | 34,400*  | 34,400* | 34,400*  | 34,400*    |                   |                    |
|                   | 90.0              | 73.7                | ←                                    | ←       | ←        | 31,600*    | 31,600*           | 29,200*  | 29,200* | 29,200*  | 31,600*    |                   |                    |
|                   | 100.0             | 71.8                | ←                                    | ←       | ←        | 29,200*    | 29,200*           | 27,000*  | 27,000* | 27,000*  | 29,200*    |                   |                    |
|                   | 110.0             | 69.8                | ←                                    | ←       | ←        | 27,000*    | 27,000*           | 25,000*  | 25,000* | 25,000*  | 27,000*    |                   |                    |
|                   | 120.0             | 67.9                | ←                                    | ←       | ←        | 25,000*    | 25,000*           | 22,900*  | 22,900* | 22,900*  | 25,000*    |                   |                    |
|                   | 130.0             | 65.8                | ←                                    | ←       | ←        | 22,900*    | 22,900*           | 20,600   | 20,600  | 20,600   | 22,900*    |                   |                    |
|                   | 140.0             | 63.8                | ←                                    | ←       | ←        | 21,200*    | 21,200*           | 19,600*  | 19,600* | 19,600*  | 21,200*    |                   |                    |
|                   | 150.0             | 61.7                | ←                                    | ←       | ←        | 19,600*    | 19,600*           | 18,100*  | 18,100* | 18,100*  | 19,600*    |                   |                    |
|                   | 160.0             | 59.6                | ←                                    | ←       | ←        | 18,100*    | 18,100*           | 16,900*  | 16,900* | 16,900*  | 18,100*    |                   |                    |
|                   | 170.0             | 57.4                | ←                                    | ←       | ←        | 16,900*    | 16,900*           | 15,600*  | 15,600* | 15,600*  | 16,900*    |                   |                    |
|                   | 180.0             | 55.2                | ←                                    | ←       | ←        | 15,600*    | 15,600*           | 14,300   | 14,300  | 14,300   | 15,600*    |                   |                    |
| 190.0             | 52.9              | ←                   | ←                                    | ←       | 14,300   | 14,600*    | 13,400            | 13,400   | 13,400  | 14,600*  |            |                   |                    |
| 200.0             | 50.6              | ←                   | ←                                    | ←       | 13,000   | 13,600*    | 12,400            | 12,400   | 12,400  | 13,600*  |            |                   |                    |
| 210.0             | 48.1              | ←                   | ←                                    | ←       | 11,500   | 12,100*    | 10,800            | 10,800   | 10,800  | 12,100*  |            |                   |                    |
| 220.0             | 45.6              | ←                   | ←                                    | ←       | 10,200   | 10,700*    | 8,700             | 8,700  | 8,700   | 10,700*  |            |                   |                    |
| 230.0             | 43.0              | ←                   | ←                                    | ←       | 8,900    | 9,400*     | 7,500             | 7,500  | 7,500   | 9,400*   |            |                   |                    |
| 240.0             | 40.2              | ←                   | ←                                    | ←       | 7,800    | 8,200*     | 6,300             | 6,300  | 6,300   | 8,200*   |            |                   |                    |
| 250.0             | 37.2              | ←                   | ←                                    | ←       | 6,800    | 7,100*     | 5,300             | 5,300  | 5,300   | 7,100*   |            |                   |                    |
| 260.0             | 34.1              | ←                   | ←                                    | ←       | 5,900    | 6,100*     | 4,300             | 4,300  | 4,300   | 6,100*   |            |                   |                    |
| 270.0             | 30.6              | ←                   | ←                                    | ←       | 5,100    | 5,200*     | 3,500             | 3,500  | 3,500   | 5,200*   |            |                   |                    |
| 280.0             | 26.7              | ←                   | ←                                    | ←       | 4,300    | 4,300*     | 2,700             | 2,700  | 2,700   | 4,300*   |            |                   |                    |
| 290.0             | 22.3              | ←                   | ←                                    | ←       | 3,600*   | 3,600*     | 2,400             | 2,400  | 2,400   | 3,600*   |            |                   |                    |
| 300.0             | 16.8              | ←                   | ←                                    | ←       | 2,800*   | 2,800*     | --                | --   | --      | 2,800*   |            |                   |                    |
| 310.0             | 8.2               | ←                   | ←                                    | ←       | 2,200*   | 2,200*     | --                | --   | --      | 2,200*   |            |                   |                    |



**HC-278H Lift Crane Capacities - On Outriggers**

| Boom Length (ft.)  | Load Radius (ft.) | Boom Angle (degree) | Capacities - On Outriggers Over Rear |       |          |       |            |       | Capacities - On Outriggers 360 Degree Rotation |       |          |       |            |       |    |       |
|--------------------|-------------------|---------------------|--------------------------------------|-------|----------|-------|------------|-------|--|-------|----------|-------|------------|-------|----|-------|
|                    |                   |                     | "A" + 0                              |       | "AB" + 0 |       | "ABCD" + 0 |       | "A" + 0  |       | "AB" + 0 |       | "ABCD" + 0 |       |    |       |
|                    |                   |                     | ctwt.                                | ctwt. | ctwt.    | ctwt. | ctwt.      | ctwt. | ctwt.  | ctwt. | ctwt.    | ctwt. | ctwt.      | ctwt. |    |       |
| 330'<br>(100.58 m) | 220.0             | 48.9                | --                                   | --    | --       | --    | 9,700*     | --    | --   | --    | --       | --    | --         | --    | -- | 6,900 |
|                    | 230.0             | 46.6                | --                                   | --    | --       | --    | 8,400*     | --    | --   | --    | --       | --    | --         | --    | -- | 5,800 |
|                    | 240.0             | 44.1                | --                                   | --    | --       | --    | 7,200*     | --    | --   | --    | --       | --    | --         | --    | -- | 4,800 |
|                    | 250.0             | 41.6                | --                                   | --    | --       | --    | 6,100*     | --    | --   | --    | --       | --    | --         | --    | -- | 3,900 |
|                    | 260.0             | 38.9                | --                                   | --    | --       | --    | 5,100*     | --    | --   | --    | --       | --    | --         | --    | -- | 3,000 |
|                    | 270.0             | 36.0                | --                                   | --    | --       | --    | 4,200*     | --    | --   | --    | --       | --    | --         | --    | -- | 2,200 |
|                    | 280.0             | 33.0                | --                                   | --    | --       | --    | 3,400*     | --    | --   | --    | --       | --    | --         | --    | -- | --    |
|                    | 290.0             | 29.6                | --                                   | --    | --       | --    | --         | --    | --   | --    | --       | --    | --         | --    | -- | --    |
|                    | 300.0             | 25.9                | --                                   | --    | --       | --    | --         | --    | --   | --    | --       | --    | --         | --    | -- | --    |
|                    | 310.0             | 21.6                | --                                   | --    | --       | --    | --         | --    | --   | --    | --       | --    | --         | --    | -- | --    |
| 320.0              | 16.2              | --                  | --                                   | --    | --       | --    | --         | --    | --   | --    | --       | --    | --         | --    | -- |       |

# HC-278H Pick & Carry Capacities

GENERAL INFORMATION ONLY

| Boom Length (ft.) | Load Radius (ft.) | Boom Angle (degree) | Capacities - On Tires      |                  |                   |                       |                       |                        |
|-------------------|-------------------|---------------------|----------------------------|------------------|-------------------|-----------------------|-----------------------|------------------------|
|                   |                   |                     | Straight Over Rear - 1 mph |                  |                   |                       |                       |                        |
|                   |                   |                     | 0 + 0<br>ctwt.             | "A" + 0<br>ctwt. | "AB" + 0<br>ctwt. | "ABCD" + "0"<br>ctwt. | "ABCD" + "A"<br>ctwt. | "ABCD" + "AB"<br>ctwt. |
| 60'<br>(18.29 m)  | 12                | 81.5                | 92,300                     | 138,000          | 142,300*          | 147,900*              | ↑                     | ↑                      |
|                   | 13                | 80.6                | 82,800                     | 124,200          | 137,900*          | 143,400*              |                       |                        |
|                   | 14                | 79.6                | 75,000                     | 112,800          | 133,800*          | 139,100*              |                       |                        |
|                   | 15                | 78.6                | 68,700                     | 103,400          | 129,900*          | 135,000*              |                       |                        |
|                   | 16                | 77.6                | 63,100                     | 95,200           | 124,400           | 131,200*              |                       |                        |
|                   | 17                | 76.7                | 58,300                     | 88,200           | 115,400           | 127,500*              |                       |                        |
|                   | 18                | 75.7                | 54,100                     | 82,100           | 107,600           | 124,100*              |                       |                        |
|                   | 19                | 74.7                | 50,400                     | 76,700           | 100,700           | 120,800*              |                       |                        |
|                   | 20                | 73.7                | 47,200                     | 72,100           | 94,600            | 117,700*              |                       |                        |
|                   | 25                | 68.7                | 35,300                     | 54,600           | 72,200            | 100,300               |                       |                        |
|                   | 30                | 63.4                | 27,700                     | 43,400           | 57,800            | 80,800                |                       |                        |
|                   | 35                | 58.0                | 22,400                     | 35,900           | 47,900            | 67,500                |                       |                        |
| 70'<br>(21.34 m)  | 12.9              | 82.0                | 83,800                     | 125,600          | 137,700*          | 143,100*              | N/A                   | N/A                    |
|                   | 13                | 81.9                | 83,000                     | 124,400          | 137,300*          | 142,700*              |                       |                        |
|                   | 14                | 81.1                | 75,200                     | 113,000          | 133,200*          | 138,400*              |                       |                        |
|                   | 15                | 80.3                | 68,800                     | 103,600          | 129,300*          | 134,400*              |                       |                        |
|                   | 16                | 79.4                | 63,300                     | 95,400           | 124,500           | 130,600*              |                       |                        |
|                   | 17                | 78.6                | 58,400                     | 88,300           | 115,500           | 126,900*              |                       |                        |
|                   | 18                | 77.8                | 54,200                     | 82,200           | 107,700           | 123,500*              |                       |                        |
|                   | 19                | 76.9                | 50,500                     | 76,800           | 100,800           | 120,200*              |                       |                        |
|                   | 20                | 76.1                | 47,300                     | 72,200           | 94,600            | 117,100*              |                       |                        |
|                   | 25                | 71.8                | 35,400                     | 54,600           | 72,200            | 100,300               |                       |                        |
|                   | 30                | 67.5                | 27,800                     | 43,500           | 57,900            | 80,800                |                       |                        |
|                   | 35                | 63.0                | 22,500                     | 35,900           | 47,900            | 67,500                |                       |                        |
| 80'<br>(24.38 m)  | 14.3              | 82.0                | 73,400                     | 110,100          | 131,300*          | 136,500*              | N/A                   | N/A                    |
|                   | 15                | 81.5                | 68,900                     | 103,600          | 128,600*          | 133,700*              |                       |                        |
|                   | 16                | 80.8                | 63,300                     | 95,400           | 124,500           | 129,900*              |                       |                        |
|                   | 17                | 80.0                | 58,400                     | 88,300           | 115,400           | 126,300*              |                       |                        |
|                   | 18                | 79.3                | 54,200                     | 82,200           | 107,700           | 122,800*              |                       |                        |
|                   | 19                | 78.6                | 50,500                     | 76,800           | 100,800           | 119,600*              |                       |                        |
|                   | 20                | 77.9                | 47,200                     | 72,200           | 94,600            | 116,500*              |                       |                        |
|                   | 25                | 74.2                | 35,400                     | 54,600           | 72,200            | 100,200               |                       |                        |
|                   | 30                | 70.4                | 27,700                     | 43,400           | 57,800            | 80,700                |                       |                        |
|                   | 35                | 66.6                | 22,400                     | 35,800           | 47,800            | 67,400                |                       |                        |
|                   | 40                | 62.6                | 18,500                     | 30,100           | 40,500            | 57,500                |                       |                        |
|                   | 50                | 54.2                | 13,200                     | 22,300           | 30,700            | 43,900                |                       |                        |
| 90'<br>(27.43 m)  | 15.7              | 82.0                | 66,300                     | 99,100           | 125,900*          | 130,900*              | ↓                     | ↓                      |
|                   | 16                | 81.8                | 64,600                     | 96,700           | 124,800*          | 129,800*              |                       |                        |
|                   | 17                | 81.2                | 59,700                     | 89,500           | 116,600           | 126,200*              |                       |                        |
|                   | 18                | 80.5                | 55,400                     | 83,300           | 108,800           | 122,700*              |                       |                        |
|                   | 19                | 79.9                | 51,600                     | 77,800           | 101,800           | 119,500*              |                       |                        |
|                   | 20                | 79.2                | 48,200                     | 73,100           | 95,600            | 116,300*              |                       |                        |
|                   | 25                | 76.0                | 36,100                     | 55,300           | 72,900            | 100,900               |                       |                        |
|                   | 30                | 72.7                | 28,300                     | 44,000           | 58,400            | 81,300                |                       |                        |
|                   | 35                | 69.3                | 22,900                     | 36,300           | 48,300            | 67,800                |                       |                        |
|                   | 40                | 65.8                | 18,900                     | 30,500           | 40,900            | 57,800                |                       |                        |
|                   | 50                | 58.6                | 13,400                     | 22,600           | 30,900            | 44,100                |                       |                        |
|                   | 60                | 50.8                | 9,800                      | 17,400           | 24,300            | 35,400                |                       |                        |
| 100'<br>(30.48 m) | 17.1              | 82.0                | 59,200                     | 88,800           | 115,700           | 125,100*              | 118,100*              | --                     |
|                   | 18                | 81.5                | 55,200                     | 83,100           | 108,700           | 122,000*              |                       |                        |

# HC-278H Pick & Carry Capacities

GENERAL INFORMATION ONLY

| Boom Length (ft.) | Load Radius (ft.) | Boom Angle (degree) | Capacities - On Tires      |                  |                   |                        |                        |                        |
|-------------------|-------------------|---------------------|----------------------------|------------------|-------------------|------------------------|------------------------|------------------------|
|                   |                   |                     | Straight Over Rear - 1 mph |                  |                   |                        |                        |                        |
|                   |                   |                     | 0 + 0<br>ctwt.             | "A" + 0<br>ctwt. | "AB" + 0<br>ctwt. | "*ABCD" + "0"<br>ctwt. | "*ABCD" + "A"<br>ctwt. | "ABCD" + "AB"<br>ctwt. |
| 100'<br>(30.48 m) | 19                | 80.9                | 51,400                     | 77,600           | 101,600           | 118,700*               | 112,000*               | ↑                      |
|                   | 20                | 80.3                | 48,100                     | 73,000           | 95,400            | 115,600*               | 109,300*               |                        |
|                   | 25                | 77.4                | 36,000                     | 55,100           | 72,700            | 100,800                | 96,500*                |                        |
|                   | 30                | 74.4                | 28,200                     | 43,800           | 58,200            | 81,000                 | 86,200*                |                        |
|                   | 35                | 71.4                | 22,700                     | 36,100           | 48,100            | 67,600                 | 76,000                 |                        |
|                   | 40                | 68.4                | 18,700                     | 30,300           | 40,700            | 57,600                 | 65,100                 |                        |
|                   | 50                | 62.1                | 13,200                     | 22,400           | 30,800            | 43,900                 | 49,800                 |                        |
|                   | 60                | 55.4                | 9,600                      | 17,200           | 24,100            | 35,200                 | 39,800                 |                        |
|                   | 70                | 48.1                | 7,100                      | 13,600           | 19,400            | 28,900                 | 33,000                 |                        |
|                   | 80                | 39.8                | 5,200                      | 10,800           | 16,000            | 24,200                 | 27,800                 |                        |
| 90                | 29.7              | 3,700               | 8,700                      | 13,200           | 20,500            | 23,700                 |                        |                        |
| 100               | 14.5              | 2,500               | 7,000                      | 11,000           | 17,600            | 20,400                 |                        |                        |
| 110'<br>(33.53 m) | 18.5              | 82.0                | 53,200                     | 80,200           | 105,000           | 119,700*               | 112,900*               | N/A                    |
|                   | 19                | 81.7                | 51,300                     | 77,400           | 101,400           | 118,000*               | 111,600*               |                        |
|                   | 20                | 81.2                | 47,900                     | 72,800           | 95,200            | 114,900*               | 108,600*               |                        |
|                   | 25                | 78.6                | 35,800                     | 54,900           | 72,500            | 100,500                | 95,900*                |                        |
|                   | 30                | 75.9                | 28,000                     | 43,600           | 58,000            | 80,800                 | 85,500*                |                        |
|                   | 35                | 73.2                | 22,500                     | 35,900           | 47,800            | 67,400                 | 75,800                 |                        |
|                   | 40                | 70.4                | 18,500                     | 30,100           | 40,400            | 57,400                 | 64,900                 |                        |
|                   | 50                | 64.8                | 13,000                     | 22,200           | 30,500            | 43,700                 | 49,600                 |                        |
|                   | 60                | 58.9                | 9,400                      | 17,000           | 23,900            | 35,000                 | 39,600                 |                        |
|                   | 70                | 52.6                | 6,900                      | 13,400           | 19,200            | 28,600                 | 32,800                 |                        |
|                   | 80                | 45.7                | 5,000                      | 10,600           | 15,700            | 23,900                 | 27,600                 |                        |
|                   | 90                | 37.9                | 3,500                      | 8,500            | 13,000            | 20,300                 | 23,500                 |                        |
| 100               | 28.3              | 2,300               | 6,800                      | 10,900           | 17,400            | 20,300                 |                        |                        |
| 110               | 13.8              | --                  | 5,400                      | 9,100            | 15,000            | 17,600                 |                        |                        |
| 120'<br>(36.58 m) | 19.9              | 82.0                | ↑                          | 73,200           | 95,800            | 114,600*               | 108,300*               | N/A                    |
|                   | 20                | 81.9                |                            | 72,600           | 95,000            | 114,200*               | 107,900*               |                        |
|                   | 25                | 79.5                |                            | 54,700           | 72,300            | 100,300                | 95,200*                |                        |
|                   | 30                | 77.1                |                            | 43,300           | 57,700            | 80,500                 | 84,900*                |                        |
|                   | 35                | 74.6                |                            | 35,700           | 47,600            | 67,200                 | 75,500                 |                        |
|                   | 40                | 72.1                |                            | 29,900           | 40,200            | 57,100                 | 64,600                 |                        |
|                   | 50                | 67.0                |                            | 22,000           | 30,300            | 43,400                 | 49,300                 |                        |
|                   | 60                | 61.7                |                            | 16,800           | 23,700            | 34,700                 | 39,300                 |                        |
|                   | 70                | 56.2                |                            | 13,100           | 19,000            | 28,400                 | 32,500                 |                        |
|                   | 80                | 50.2                |                            | 10,400           | 15,500            | 23,700                 | 27,300                 |                        |
|                   | 90                | 43.6                |                            | 8,300            | 12,800            | 20,100                 | 23,300                 |                        |
|                   | 100               | 36.2                |                            | 6,600            | 10,700            | 17,200                 | 20,100                 |                        |
| 110               | 27.1              | 5,200               | 8,900                      | 14,800           | 17,400            |                        |                        |                        |
| 120               | 13.2              | 4,000               | 7,400                      | 12,800           | 15,200            |                        |                        |                        |
| 130'<br>(39.62 m) | 21.3              | 82.0                | N/A                        | 67,000           | 87,800            | 110,100*               | 103,700*               | ↓                      |
|                   | 25                | 80.3                |                            | 54,500           | 72,100            | 100,000                | 94,500*                |                        |
|                   | 30                | 78.1                |                            | 43,000           | 57,400            | 80,200                 | 84,200*                |                        |
|                   | 35                | 75.8                |                            | 35,400           | 47,300            | 66,900                 | 75,200                 |                        |
|                   | 40                | 73.5                |                            | 29,600           | 39,900            | 56,800                 | 64,300                 |                        |
|                   | 50                | 68.9                |                            | 21,700           | 30,000            | 43,100                 | 49,000                 |                        |
|                   | 60                | 64.1                |                            | 16,500           | 23,400            | 34,400                 | 39,000                 |                        |
|                   | 70                | 59.1                |                            | 12,800           | 18,700            | 28,100                 | 32,300                 |                        |
|                   | 80                | 53.8                |                            | 10,100           | 15,200            | 23,400                 | 27,000                 |                        |
|                   | 90                | 48.1                |                            | 8,000            | 12,500            | 19,800                 | 23,000                 |                        |
|                   | 100               | 41.9                |                            | 6,300            | 10,400            | 16,900                 | 19,800                 |                        |
|                   | 110               | 34.7                |                            | 5,000            | 8,600             | 14,600                 | 17,200                 |                        |
|                   | 120               | 26.0                |                            | 3,800            | 7,200             | 12,600                 | 15,000                 |                        |
| 130               | 12.7              | 2,800               | 5,900                      | 10,900           | 13,100            |                        |                        |                        |
| 140'<br>(42.67 m) | 22.7              | 82.0                | ↓                          | 61,500           | 80,800            | 105,500*               | 99,400*                | 102,800*               |
|                   | 25                | 81.0                |                            | 54,200           | 71,800            | 99,600*                | 93,800*                | 97,000*                |
|                   | 30                | 79.0                |                            | 42,800           | 57,200            | 79,900                 | 83,500*                | 86,400*                |
|                   | 35                | 76.9                |                            | 35,200           | 47,000            | 66,600                 | 74,900                 | 77,800*                |
|                   | 40                | 74.7                |                            | 29,400           | 39,600            | 56,500                 | 64,000                 | 70,800*                |
|                   | 50                | 70.5                |                            | 21,400           | 29,700            | 42,800                 | 48,700                 | 56,900                 |
|                   | 60                | 66.0                |                            | 16,200           | 23,100            | 34,200                 | 38,700                 | 45,500                 |
|                   | 70                | 61.5                |                            | 12,500           | 18,400            | 27,800                 | 32,000                 | 37,400                 |
|                   | 80                | 56.7                |                            | 9,800            | 14,900            | 23,100                 | 26,800                 | 31,800                 |
| 90                | 51.7              | 7,700               | 12,300                     | 19,500           | 22,700            | 27,200                 |                        |                        |

# HC-278H Pick & Carry Capacities

GENERAL INFORMATION ONLY

| Boom Length (ft.) | Load Radius (ft.) | Boom Angle (degree) | Capacities - On Tires      |                  |                   |                       |                       |                        |
|-------------------|-------------------|---------------------|----------------------------|------------------|-------------------|-----------------------|-----------------------|------------------------|
|                   |                   |                     | Straight Over Rear - 1 mph |                  |                   |                       |                       |                        |
|                   |                   |                     | 0 + 0<br>ctwt.             | "A" + 0<br>ctwt. | "AB" + 0<br>ctwt. | "ABCD" + "0"<br>ctwt. | "ABCD" + "A"<br>ctwt. | "ABCD" + "AB"<br>ctwt. |
| 140'<br>(42.67 m) | 100               | 46.2                | ↑                          | 6,100            | 10,100            | 16,600                | 19,500                | 23,500                 |
|                   | 110               | 40.3                |                            | 4,700            | 8,400             | 14,300                | 16,900                | 20,500                 |
|                   | 120               | 33.4                |                            | 3,500            | 6,900             | 12,300                | 14,700                | 18,000                 |
|                   | 130               | 25.0                |                            | 2,600            | 5,700             | 10,700                | 12,900                | 15,900                 |
|                   | 140               | 12.2                |                            | --               | 4,600             | 9,200                 | 11,300                | 14,100                 |
| 150'<br>(45.72 m) | 24.0              | 82.0                |                            | 56,700           | 74,700            | 101,200*              | 95,300*               | 98,500*                |
|                   | 25                | 81.6                |                            | 53,900           | 71,500            | 98,900*               | 93,000*               | 96,300*                |
|                   | 30                | 79.7                |                            | 42,500           | 56,900            | 82,800*               | 82,800*               | 85,700*                |
|                   | 35                | 77.7                |                            | 34,900           | 46,700            | 66,300                | 74,400*               | 77,100*                |
|                   | 40                | 75.8                |                            | 29,100           | 39,300            | 56,200                | 63,700                | 70,200*                |
|                   | 50                | 71.8                |                            | 21,100           | 29,400            | 42,500                | 48,400                | 56,600                 |
|                   | 60                | 67.7                |                            | 15,900           | 22,800            | 33,900                | 38,400                | 45,100                 |
|                   | 70                | 63.5                |                            | 12,200           | 18,100            | 27,500                | 31,700                | 37,100                 |
|                   | 80                | 59.2                |                            | 9,500            | 14,600            | 22,800                | 26,500                | 31,500                 |
|                   | 90                | 54.6                |                            | 7,400            | 11,900            | 19,200                | 22,400                | 26,900                 |
|                   | 100               | 49.8                |                            | 5,800            | 9,800             | 16,300                | 19,200                | 23,200                 |
|                   | 110               | 44.6                |                            | 4,400            | 8,100             | 14,000                | 16,600                | 20,200                 |
|                   | 120               | 38.8                |                            | 3,300            | 6,600             | 12,000                | 14,400                | 17,700                 |
|                   | 130               | 32.3                |                            | 2,300            | 5,400             | 10,400                | 12,600                | 15,600                 |
|                   | 140               | 24.2                |                            | --               | 4,400             | 9,000                 | 11,000                | 13,800                 |
| 150               | 11.8              |                     | --                         | 3,400            | 7,700             | 9,600                 | 12,300                |                        |
| 160'<br>(48.77 m) | 25.4              | 82.0                | N/A                        | --               | 69,700            | 97,000                | 91,300*               | 94,500*                |
|                   | 30                | 80.3                |                            | --               | 56,600            | 79,300                | 82,100*               | 85,000*                |
|                   | 35                | 78.5                |                            | --               | 46,400            | 66,000                | 74,100*               | 76,400*                |
|                   | 40                | 76.7                |                            | --               | 39,000            | 55,900                | 63,400                | 69,500*                |
|                   | 50                | 73.0                |                            | --               | 29,100            | 42,200                | 48,100                | 56,200                 |
|                   | 60                | 69.2                |                            | --               | 22,500            | 33,500                | 38,100                | 44,800                 |
|                   | 70                | 65.3                |                            | --               | 17,800            | 27,200                | 31,400                | 37,100                 |
|                   | 80                | 61.3                |                            | --               | 14,300            | 22,500                | 26,100                | 31,200                 |
|                   | 90                | 57.1                |                            | --               | 11,600            | 18,900                | 22,100                | 26,500                 |
|                   | 100               | 52.8                |                            | --               | 9,500             | 16,000                | 18,900                | 22,900                 |
|                   | 110               | 48.1                |                            | --               | 7,800             | 13,700                | 16,300                | 19,900                 |
|                   | 120               | 43.1                |                            | --               | 6,300             | 11,700                | 14,100                | 17,400                 |
|                   | 130               | 37.6                |                            | --               | 5,100             | 10,100                | 12,300                | 15,300                 |
|                   | 140               | 31.2                |                            | --               | 4,100             | 8,700                 | 10,700                | 13,500                 |
|                   | 150               | 23.4                |                            | --               | 3,200             | 7,500                 | 9,400                 | 12,000                 |
| 160               | 11.4              | --                  | --                         | 2,400            | 6,400             | 8,200                 | 10,600                |                        |
| 170'<br>(51.82 m) | 26.8              | 82.0                |                            | --               | 64,900            | 90,600                | 87,600*               | 90,700*                |
|                   | 30                | 80.9                |                            | --               | 56,300            | 79,000                | 81,400*               | 84,300*                |
|                   | 35                | 79.2                |                            | --               | 46,100            | 65,700                | 73,500*               | 75,700*                |
|                   | 40                | 77.5                |                            | --               | 38,600            | 55,600                | 63,100                | 68,900*                |
|                   | 50                | 74.0                |                            | --               | 28,800            | 41,800                | 47,700                | 55,900                 |
|                   | 60                | 70.5                |                            | --               | 22,200            | 33,200                | 37,700                | 44,500                 |
|                   | 70                | 66.9                |                            | --               | 17,500            | 26,900                | 31,100                | 36,800                 |
|                   | 80                | 63.1                |                            | --               | 14,000            | 22,200                | 25,800                | 30,800                 |
|                   | 90                | 59.3                |                            | --               | 11,300            | 18,600                | 21,800                | 26,200                 |
|                   | 100               | 55.3                |                            | --               | 9,200             | 15,700                | 18,600                | 22,600                 |
|                   | 110               | 51.1                |                            | --               | 7,400             | 13,400                | 16,000                | 19,600                 |
|                   | 120               | 46.6                |                            | --               | 6,000             | 11,400                | 13,800                | 17,100                 |
|                   | 130               | 41.7                |                            | --               | 4,800             | 9,800                 | 12,000                | 15,000                 |
|                   | 140               | 36.4                |                            | --               | 3,700             | 8,400                 | 10,400                | 13,200                 |
|                   | 150               | 30.3                |                            | --               | 2,800             | 7,200                 | 9,100                 | 11,700                 |
| 160               | 22.7              |                     | --                         | 2,100            | 6,100             | 7,900                 | 10,300                |                        |
| 170               | 11.1              |                     | --                         | --               | 5,200             | 6,800                 | 9,100                 |                        |
| 180'<br>(54.86 m) | 28.2              | 82.0                | ↓                          | --               | 60,500            | 84,800                | 84,100*               | 87,100*                |
|                   | 30                | 81.4                |                            | --               | 55,900            | 78,600                | 80,700*               | 83,600*                |
|                   | 35                | 79.8                |                            | --               | 45,800            | 65,300                | 72,800*               | 75,000*                |
|                   | 40                | 78.2                |                            | --               | 38,300            | 55,300                | 62,700                | 68,200*                |
|                   | 50                | 74.9                |                            | --               | 28,500            | 41,500                | 47,400                | 55,600                 |
|                   | 60                | 71.6                |                            | --               | 21,900            | 32,900                | 37,400                | 44,100                 |
|                   | 70                | 68.2                |                            | --               | 17,200            | 26,600                | 30,700                | 36,500                 |
|                   | 80                | 64.7                |                            | --               | 13,700            | 21,900                | 25,500                | 30,500                 |
|                   | 90                | 61.2                |                            | --               | 11,000            | 18,300                | 21,500                | 25,900                 |
|                   | 100               | 57.5                |                            | --               | --                | 8,900                 | 15,400                | 18,300                 |

# HC-278H Pick & Carry Capacities

GENERAL INFORMATION ONLY

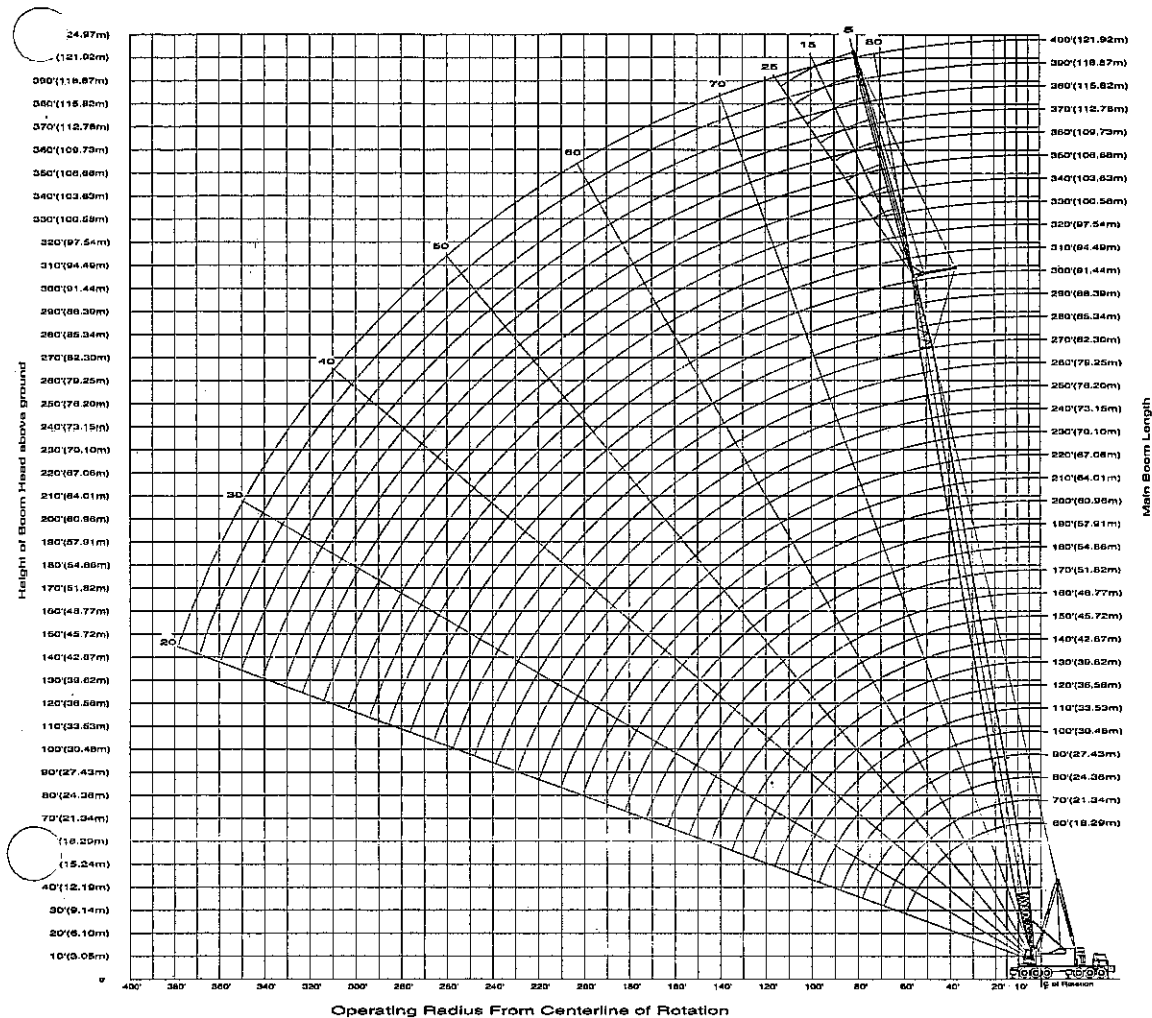
| Boom Length (ft.) | Load Radius (ft.) | Boom Angle (degree) | Capacities - On Tires      |                  |                   |                         |                        |                        |
|-------------------|-------------------|---------------------|----------------------------|------------------|-------------------|-------------------------|------------------------|------------------------|
|                   |                   |                     | Straight Over Rear - 1 mph |                  |                   |                         |                        |                        |
|                   |                   |                     | 0 + 0<br>ctwt.             | "A" + 0<br>ctwt. | "AB" + 0<br>ctwt. | **"ABCD" + "0"<br>ctwt. | *"ABCD" + "A"<br>ctwt. | "ABCD" + "AB"<br>ctwt. |
| 180'<br>(54.86 m) | 110               | 53.6                | ↑                          | ↑                | 7,100             | 13,000                  | 15,600                 | 19,200                 |
|                   | 120               | 49.5                |                            |                  | 5,700             | 11,100                  | 13,500                 | 16,800                 |
|                   | 130               | 45.2                |                            |                  | 4,500             | 9,400                   | 11,600                 | 14,700                 |
|                   | 140               | 40.5                |                            |                  | 3,400             | 8,000                   | 10,100                 | 12,900                 |
|                   | 150               | 35.3                |                            |                  | 2,500             | 6,800                   | 8,700                  | 11,400                 |
|                   | 160               | 29.4                |                            |                  | --                | 5,800                   | 7,600                  | 10,000                 |
|                   | 170               | 22.1                |                            |                  | --                | 4,800                   | 6,500                  | 8,800                  |
|                   | 180               | 10.8                |                            |                  | --                | 4,000                   | 5,600                  | 7,800                  |
| 190'<br>(57.91 m) | 29.6              | 82.0                | ↑                          | ↑                | 79,600            | 80,700*                 | 83,600*                |                        |
|                   | 30                | 81.9                |                            |                  | 78,300            | 80,000*                 | 82,900*                |                        |
|                   | 35                | 80.4                |                            |                  | 65,000            | 72,100*                 | 74,300*                |                        |
|                   | 40                | 78.8                |                            |                  | 54,900            | 62,400                  | 67,600*                |                        |
|                   | 50                | 75.7                |                            |                  | 41,100            | 47,000                  | 55,200                 |                        |
|                   | 60                | 72.6                |                            |                  | 32,600            | 37,000                  | 43,800                 |                        |
|                   | 70                | 69.4                |                            |                  | 26,200            | 30,400                  | 36,200                 |                        |
|                   | 80                | 66.1                |                            |                  | 21,500            | 25,200                  | 30,200                 |                        |
|                   | 90                | 62.8                |                            |                  | 17,900            | 21,100                  | 25,600                 |                        |
|                   | 100               | 59.4                |                            |                  | 15,000            | 17,900                  | 21,900                 |                        |
|                   | 110               | 55.8                |                            |                  | 12,700            | 15,300                  | 18,900                 |                        |
|                   | 120               | 52.1                |                            |                  | 10,700            | 13,100                  | 16,400                 |                        |
|                   | 130               | 48.1                |                            |                  | 9,100             | 11,300                  | 14,300                 |                        |
|                   | 140               | 43.9                |                            |                  | 7,700             | 9,700                   | 12,600                 |                        |
| 150               | 39.4              | 6,500               | 8,400                      | 11,000           |                   |                         |                        |                        |
| 160               | 34.4              | 5,400               | 7,200                      | 9,700            |                   |                         |                        |                        |
| 170               | 28.6              | 4,500               | 6,200                      | 8,500            |                   |                         |                        |                        |
| 180               | 21.5              | 3,700               | 5,300                      | 7,500            |                   |                         |                        |                        |
| 190               | 10.5              | 3,000               | 4,500                      | 6,500            |                   |                         |                        |                        |
| 200'<br>(60.96 m) | 31                | 82.0                | N/A                        | N/A              | 74,800            | 77,500*                 | 80,300*                |                        |
|                   | 35                | 80.8                |                            |                  | 64,700            | 71,400*                 | 74,100*                |                        |
|                   | 40                | 79.4                |                            |                  | 54,600            | 62,100                  | 66,900*                |                        |
|                   | 50                | 76.5                |                            |                  | 40,800            | 46,700                  | 54,900                 |                        |
|                   | 60                | 73.5                |                            |                  | 32,300            | 37,100                  | 43,400                 |                        |
|                   | 70                | 70.5                |                            |                  | 25,900            | 30,100                  | 35,800                 |                        |
|                   | 80                | 67.4                |                            |                  | 21,200            | 24,800                  | 29,800                 |                        |
|                   | 90                | 64.3                |                            |                  | 17,600            | 20,800                  | 25,200                 |                        |
|                   | 100               | 61.0                |                            |                  | 14,700            | 17,600                  | 21,600                 |                        |
|                   | 110               | 57.7                |                            |                  | 12,400            | 15,000                  | 18,600                 |                        |
|                   | 120               | 54.3                |                            |                  | 10,400            | 12,800                  | 16,100                 |                        |
|                   | 130               | 50.6                |                            |                  | 8,800             | 11,000                  | 14,000                 |                        |
|                   | 140               | 46.8                |                            |                  | 7,400             | 9,400                   | 12,200                 |                        |
|                   | 150               | 42.8                |                            |                  | 6,200             | 8,100                   | 10,700                 |                        |
| 160               | 38.4              | 5,100               | 6,900                      | 9,300            |                   |                         |                        |                        |
| 170               | 33.5              | 4,200               | 5,800                      | 8,200            |                   |                         |                        |                        |
| 180               | 27.9              | 3,300               | 4,900                      | 7,100            |                   |                         |                        |                        |
| 190               | 20.9              | 2,600               | 4,100                      | 6,200            |                   |                         |                        |                        |
| 200               | 10.2              | --                  | 3,400                      | 5,400            |                   |                         |                        |                        |
| 210'<br>(64.01 m) | 32.4              | 82.0                | ↓                          | ↓                | 70,900            | 74,400*                 | 77,200*                |                        |
|                   | 35                | 81.3                |                            |                  | 64,300            | 70,800*                 | 73,400*                |                        |
|                   | 40                | 79.9                |                            |                  | 54,200            | 61,700                  | 66,200*                |                        |
|                   | 50                | 77.1                |                            |                  | 40,400            | 46,300                  | 54,500                 |                        |
|                   | 60                | 74.3                |                            |                  | 31,900            | 36,800                  | 43,100                 |                        |
|                   | 70                | 71.4                |                            |                  | 25,600            | 29,700                  | 35,500                 |                        |
|                   | 80                | 68.5                |                            |                  | 20,900            | 24,500                  | 29,500                 |                        |
|                   | 90                | 65.6                |                            |                  | 17,200            | 20,400                  | 24,900                 |                        |
|                   | 100               | 62.5                |                            |                  | 14,400            | 17,200                  | 21,200                 |                        |
|                   | 110               | 59.4                |                            |                  | 12,000            | 14,600                  | 18,200                 |                        |
|                   | 120               | 56.2                |                            |                  | 10,100            | 12,400                  | 15,700                 |                        |
|                   | 130               | 52.8                |                            |                  | 8,400             | 10,600                  | 13,700                 |                        |
|                   | 140               | 49.3                |                            |                  | 7,000             | 9,100                   | 11,900                 |                        |
|                   | 150               | 45.6                |                            |                  | 5,800             | 7,700                   | 10,300                 |                        |
| 160               | 41.7              | 4,800               | 6,500                      | 9,000            |                   |                         |                        |                        |
| 170               | 37.4              | 3,800               | 5,500                      | 7,800            |                   |                         |                        |                        |
| 180               | 32.6              | 3,000               | 4,600                      | 6,800            |                   |                         |                        |                        |
| 190               | 27.2              | 2,300               | 3,800                      | 5,800            |                   |                         |                        |                        |

# HC-278H Pick & Carry Capacities

GENERAL INFORMATION ONLY

| Boom Length (ft.) | Load Radius (ft.) | Boom Angle (degree) | Capacities - On Tires      |              |               |                   |                   |                    |
|-------------------|-------------------|---------------------|----------------------------|--------------|---------------|-------------------|-------------------|--------------------|
|                   |                   |                     | Straight Over Rear - 1 mph |              |               |                   |                   |                    |
|                   |                   |                     | 0 + 0 cwt.                 | "A" + 0 cwt. | "AB" + 0 cwt. | "ABCD" + "0" cwt. | "ABCD" + "A" cwt. | "ABCD" + "AB" cwt. |
| 210'<br>(64.01 m) | 200               | 20.4                | --                         | --           | --            | --                | 3,000             | 5,000              |
|                   | 210               | 10.0                | --                         | --           | --            | --                | 2,400             | 4,300              |
| 220'<br>(67.06 m) | 33.8              | 82.0                | ↑                          | ↑            | ↑             | ↑                 | 71,900*           | 74,100*            |
|                   | 35                | 81.7                |                            |              |               |                   | 70,100*           | 72,700*            |
|                   | 40                | 80.4                |                            |              |               |                   | 61,400            | 65,600*            |
|                   | 50                | 77.7                |                            |              |               |                   | 46,000            | 54,200             |
|                   | 60                | 75.0                |                            |              |               |                   | 36,500            | 42,700             |
|                   | 70                | 72.3                |                            |              |               |                   | 29,400            | 35,100             |
|                   | 80                | 69.6                |                            |              |               |                   | 24,100            | 29,200             |
|                   | 90                | 66.8                |                            |              |               |                   | 20,100            | 24,500             |
|                   | 100               | 63.9                |                            |              |               |                   | 16,900            | 20,900             |
|                   | 110               | 60.9                |                            |              |               |                   | 14,300            | 17,900             |
|                   | 120               | 57.9                |                            |              |               |                   | 12,100            | 15,400             |
|                   | 130               | 54.8                |                            |              |               |                   | 10,300            | 13,300             |
|                   | 140               | 51.5                |                            |              |               |                   | 8,700             | 11,500             |
|                   | 150               | 48.1                |                            |              |               |                   | 7,400             | 10,000             |
|                   | 160               | 44.5                |                            |              |               |                   | 6,200             | 8,600              |
|                   | 170               | 40.7                |                            |              |               |                   | 5,100             | 7,500              |
|                   | 180               | 36.5                |                            |              |               |                   | 4,200             | 6,400              |
| 190               | 31.9              | 3,400               | 5,500                      |              |               |                   |                   |                    |
| 200               | 26.5              | 2,700               | 4,700                      |              |               |                   |                   |                    |
| 210               | 19.9              | N/A                 | N/A                        | N/A          | N/A           | --                | 3,900             |                    |
| 220               | 9.7               | N/A                 | N/A                        | N/A          | N/A           | --                | 3,200             |                    |
| 230'<br>(70.10 m) | 35.2              | 82.0                | ↓                          | ↓            | ↓             | ↓                 | 69,100*           | 71,800*            |
|                   | 40                | 80.8                |                            |              |               |                   | 61,000            | 64,900*            |
|                   | 50                | 78.3                |                            |              |               |                   | 45,600            | 53,600*            |
|                   | 60                | 75.7                |                            |              |               |                   | 36,100            | 42,300             |
|                   | 70                | 73.1                |                            |              |               |                   | 29,100            | 34,800             |
|                   | 80                | 70.5                |                            |              |               |                   | 23,800            | 28,800             |
|                   | 90                | 67.8                |                            |              |               |                   | 19,800            | 24,200             |
|                   | 100               | 65.1                |                            |              |               |                   | 16,500            | 20,500             |
|                   | 110               | 62.3                |                            |              |               |                   | 13,900            | 17,500             |
|                   | 120               | 59.5                |                            |              |               |                   | 11,700            | 15,000             |
|                   | 130               | 56.5                |                            |              |               |                   | 9,900             | 13,000             |
|                   | 140               | 53.5                |                            |              |               |                   | 8,400             | 11,200             |
|                   | 150               | 50.3                |                            |              |               |                   | 7,000             | 9,600              |
|                   | 160               | 47.0                |                            |              |               |                   | 5,800             | 8,300              |
|                   | 170               | 43.5                |                            |              |               |                   | 4,800             | 7,100              |
|                   | 180               | 39.8                |                            |              |               |                   | 3,900             | 6,100              |
|                   | 190               | 35.7                |                            |              |               |                   | 3,100             | 5,100              |
| 200               | 31.2              | 2,300               | 4,300                      |              |               |                   |                   |                    |
| 210               | 25.9              | --                  | 3,600                      |              |               |                   |                   |                    |
| 220               | 19.5              | --                  | 2,900                      |              |               |                   |                   |                    |
| 230               | 9.5               | --                  | 2,300                      |              |               |                   |                   |                    |

# HC-278H Working Range and Lift Crane Notes



GENERAL INFORMATION ONLY

**General:**

1. This load represents the 10.4' (3.17 m) radius duty equivalent of the maximum available load moment.
2. 625,000 lb. (283 500 kg) at 12' (3.66 m) radius was the maximum static overload test performed per SAE J987.
3. Rated lifting capacities in pounds as shown on lift charts pertain to the crane as originally manufactured and normally equipped. Modifications to the crane or use of optional equipment other than that specified can result in a reduction of capacity.
4. Construction equipment can be dangerous if improperly operated or maintained. Operation and maintenance of the crane must be in compliance with the information in the Operator's, Parts and Safety Manuals supplied with the crane. If these manuals are missing, order replacements through the distributor.
5. The operator and other personnel associated with the crane shall read and fully understand the latest applicable American National Standards Institute (ANSI) safety standards for cranes.
6. The maximum allowable lifting capacities are based on crane standing level on firm supporting surface.

**Set-Up:**

1. The crane shall be leveled on a firm supporting surface. Depending on the nature of the supporting surface, it may be necessary to have structural supports under the pontoons to spread the load to a larger bearing surface.
2. For required parts of line, see wire rope strength and winch performance tables in Crane Rating Manual.

**Lift Crane Operation:**

1. Capacities shown are in pounds and are not more than 85% of the tipping loads on outriggers or 75% of the tipping loads on tires with the crane standing level on firm supporting surface. A deduction must be made from these capacities for weight of hook block, hook, sling, grapple, load weighing device, etc. When using main hook while jib is attached, reduce capacities by values shown in Crane Rating Manual. See Operator's Manual for all limitations when raising or lowering attachment.
2. The capacities marked with an asterisk (\*) are based on factors other than those which would cause a tipping condition.

3. For recommended reeving, parts of line, wire rope type and wire rope inspection, see wire rope strength chart, Operator's Manual and Parts Manual.
4. Load ratings are based on freely suspended loads and make no allowances for such factors as the effect of the wind, ground conditions, and operating speeds. The operator shall therefore reduce load ratings in order to take these conditions into account.
5. The 35' (10.67 m) live mast must be used for all capacities listed.
6. The least stable rated condition is over the side.
7. The jib cannot be used on a boom longer than 300' (91.44 m).
8. Maximum main boom length without jib is 330' (100.58 m).
9. Do not operate at radii and boom lengths where the Crane Rating Manual lists no capacity. Do not use longer booms or jibs than those listed in the Crane Rating Manual. Any of the above can cause a tipping condition, or boom and jib failure.
10. These capacities apply only to the crane as originally manufactured and normally equipped by Link-Belt Construction Equipment Company.

Link-Belt Construction Equipment Company Lexington, Kentucky

A unit of Sumitomo Construction Machinery Co., Ltd.

© Link-Belt is a registered trademark. Copyright 1997. All rights reserved. We are constantly improving our products and therefore reserve the right to change designs and specifications.